



P4 Advertising LED Sign User Manual


An Indoor Commercial Display

Contents

1. AzarPixel Introduction	4
2. Guideline.....	4
Important Notice:	5
Safety Instructions:.....	5
Troubleshooting:.....	6
3. Quick Start-Up	7
1. Powering Up the Device.....	7
2. Download HDPlayer Software.....	7
3. Network Configuration.....	7
4. Configuration of LED Panel.....	7
5. Build and Upload Content to LED Panel	7
4. Product Introduction.....	8
Product Description	8
Dimensions, Components and Accessories.....	10
Technical Specifications.....	11
Product Features.....	12
5. Packaging	13
6. Software Instruction	14
Setting Up the Software	14
1. Download Software via link	14
2. Installation Interface	14
3. Choosing Installation Type.....	15
4. Choose Installation Path	15
5. Completing the Setup Process.....	16
6. Setting Screen Parameters	16
Program Creating	18
1. Program Areas and Functions Introduction.....	18
2. Adding programs.....	19
3. Program attribute	19
4. Custom Area Creation.....	20
5. Add Videos, Pictures, Animation, Text and other source files	21
6. Preview of the Result	25
Program Uploading	26
1. Send Program via Wi-Fi	26
2. Send program via U disk.....	30

System Control.....	31
1. Brightness setting.....	31
2. Time Correction.....	33
3. Switch machine settings.....	34
4. Update device name	34
5. Wi-Fi settings	35
6. Wi-Fi Password/SSID Reset	37
7. Mobile app	38
Download "LedArt" control software on mobile phone	38
Connect D16's Wi-Fi and make new programs in Ledart.....	39
Create New Screen.....	41
Add Content to New Screen.....	42

1. AzarPixel Introduction

Thank you for choosing . We truly appreciate and value your trust in our **P4 Advertising LED Sign**. Here in AzarPixel we are dedicated to providing top-quality solutions tailored to meet the diverse needs of our valued customers:

1. In AzarPixel.com we provide a full range of **professional Audio/Video equipment services**, including **LED device repair, maintenance, installation, circuit board troubleshooting, cable restoration, and LED module upgrades or reconditioning**.
2. In SinaPlug.com (powered by AzarPixel) **we supply** a wide range of **spare and electronic parts**, as well as devices for the A/V and LED industry, **all available online**. Whenever you need a new purchase or upgrade, ensure to check our latest offers and updated products' documents to stay informed.
3. Market.AzarPixel.com (powered by AzarPixel) is a **domestic online marketplace** that provides a platform for individuals and businesses **to buy and sell new or used A/V equipment**. Whether you're looking to sell old devices, upgrade, or exchange them for new or pre-owned ones, you can count on this platform.



2. Guideline

This user manual is designed to help you get the most out of your **P4 Advertising LED Sign** ensuring safe and efficient operation.

In this guide, you will find safety instructions, basic troubleshooting tips, product introduction, and step-by-step instructions to enhance your experience with this LED Sign. Whether you are using it for the first time or looking for advanced features, this manual will provide the necessary information to operate your device with confidence.

Please read this manual carefully before powering on the panel and keep it for future reference. You can always find and download the latest version of this User Manual in SinaPlug.com. If you have any questions or need further assistance, our customer support team is always ready and would be glad to help you, please contact us via: info@azarpixel.com or our official website page: <https://www.azarpixel.com/contact> or Call us: +1 972 707 0801, we would be glad to hear your voice!

Important Notice:

Please follow all safety instructions and operational guidelines outlined in this manual to prevent product damage and ensure user safety. Improper use or misuse of the LED panel may pose safety risks and could result in property damage. Azar Pixel LLC will not be held liable for any damage, malfunction, injury, or other consequences resulting from such misuse.



WARNING!

Read the safety precautions in this section before Installing, powering, operation or servicing this product.

Safety Instructions:



All instructions must be **read and fully understood** before installing, wiring, operating, or maintaining the modules or any associated electrical equipment. Installation and maintenance must be performed **only by licensed electricians or qualified personnel**.



AzarPixel accepts **no responsibility** for any loss, damage, injury, or expense arising from improper installation, incorrect configuration, inadequate maintenance, unintended use, or unauthorized modification of the product.



Do not dispose of electrical appliances as unsorted municipal waste. To prevent potential harm to the environment and human health, ensure these appliances are disposed of through designated separate collection facilities.

⚠ Electrical Safety Warning:

Direct contact with electrically active parts may result in **burns, sparks, serious injury, or death**. **Always turn off the panel and disconnect the power cable before making or breaking any electrical connections.**

General Safety Instructions:

- Ensure all **connectors are clean, dry, and free from corrosion** before making any connections.
- Connect the product **only to AC mains power: 110V, 60Hz**.
- To protect the LED panel from potential electrical damage, it is strongly recommended to use appropriate **circuit protection devices** and a high-quality **surge suppressor**. Make sure these protective components are properly installed and fully operational.
- Inspect all electrical distribution equipment, cables, and connected devices to ensure they meet **current regulatory and safety standards** before use.
- **Do not apply excessive mechanical stress** to the modules. Avoid dropping objects onto the panel or placing heavy loads on it, as this may affect performance and reduce the product's lifespan.

- **Do not block ventilation openings** and ensure adequate airflow around the LED panel to prevent overheating, additionally **do NOT turn on** the product if the **ambient temperature exceeds 50°C (122°F)**, which may cause malfunction or other unexpected explosion and potential fire hazards.
- **Do not clean the product surface by directly applying water** or using chemical solvent, especially while the device is powered on. Use appropriate fire extinguishers rated for electrical fires and **never use water to extinguish fires of electrical origin**.
- Use proper **mounting equipment** to securely install the panel. Improper or unstable mounting can lead to serious safety hazards.
- Avoid prolonged exposure of the LED panel to **direct sunlight**, as this may degrade its materials and negatively affect visual performance over time.

Troubleshooting:

If you encounter any issues with the operation of your LED panel, please follow these initial troubleshooting steps:

1. **Verify the input power** is connected properly and the panel is receiving power.
2. **Check the fuse** to ensure it has not blown or been damaged (make sure you check it while the panel power cable is disconnected).
3. **Perform a Wi-Fi password reset** according to the instructions provided in the user manual, as this can often resolve common issues (Please refer to Section 6: System Control / Wi-Fi Password/SSID Reset).

If the problem persists after these steps, please don't hesitate to **contact our customer support team** for further assistance:

 **Customer Service:** +1 972 707 0801

 **Email Support:** info@azarpixel.com

We're here to help!

3. Quick Start-Up

1. Powering Up the Device

- ✓ Ensure the installation environment meets **IP33 standards** for protection against light dust and water spray.
- ✓ Connect the LED display to a **110V AC** power source using the provided **US plug**.
- ✓ Wait for the device to power on and initialize.

2. Download HDPlayer Software

- ✓ Download and install the latest **HDPlayer software** from the official Huidu website.
https://www.hdwell.com/Download/index_100000010736467.html
- ✓ For mobile applications, refer to Section 6) Mobile App in the manual or scan the **QR code** below.



QR code for Ledart from AppStore (iOS)



QR code for Ledart from Play Store (Android)

3. Network Configuration

- ✓ Connect your controlling device to the LED panel via the **Wi-Fi or Ethernet port**.
- ✓ The **Wi-Fi SSID** for your LED panel is **printed on a label attached to the frame of the panel** you receive. You can use it to connect to your device, the default Wi-Fi password is: "**AzarPixel888**". If you wish, you can change the **SSID** and even the **password** using an Ethernet port and cable through the HDPlayer.

4. Configuration of LED Panel

- ✓ Open HDPlayer and navigate to "**Screen Parameter Setting**."
- ✓ Set the device type to **D16**, **width to 240**, and **height to 120**.
- ✓ Adjust additional parameters as needed for your specific installation.

5. Build and Upload Content to LED Panel

- ✓ Create a Program by clicking on the "**Program**" button at the upper left of the Screen.
- ✓ Add your desired content to this program. This can include a variety of formats such as text, images, videos, animations, and more. For detailed guidance, please refer to **Section 6: Program Creating, Part 5**.
- ✓ Sometimes it might be easier to customize your content first, using desktop software, mobile applications, or more professional graphic/video editing tools such as Adobe Photoshop/Premiere, saving your content in a compatible format and then upload it to your program.
- ✓ The most important step is to **back up** your file by clicking the '**Save**' button in the desktop or mobile version of HDPlayer. Make sure to save your program at every stage, **especially before uploading** it to the screen.
- ✓ Upload your program to the LED panel using one of the following methods:
 - HDPlayer desktop software via WiFi / Ethernet / USB drive (for offline playback) – **See Section 6: Program Uploading**
 - Mobile application (see **Section 7 of the manual**)

4. Product Introduction

The AzarPixel LED Display turns storefronts and street-side locations into powerful customer magnets. With vibrant, eye-catching visuals, it captures the attention of passersby and draws in customers from a distance. Whether you're showcasing special offers, brand messaging, or promotional videos, this dynamic outdoor signage boosts advertising impact and enhances your brand visibility. Designed to increase impulse purchases and drive foot traffic, it's the perfect solution to stand out and maximize customer engagement in today's competitive retail environment.



Light Up Your Valued Brand and Products

Product Description

The AzarPixel P4 LED Display is engineered for outstanding visual performance and versatility, making it ideal for both **indoor** and **outdoor** use. With an impressive brightness of over **5,000 nits** and a **pixel pitch of 4mm**, it delivers sharp, high-definition images with excellent visibility, even in daylight.

This **full-color** LED panel measures **960mm x 480mm** (screen area), and comes with a modern, slim, and **lightweight aluminum frame**, giving it a total frame size of **101cm x 53cm**. The design supports easy installation and mobility, making it perfect for advertising applications, exhibitions, auto shows, and dynamic in-store or street-side promotions.

The panel features a pixel resolution of **240px × 120px (WxH)** and utilizes **SMD1921** LEDs, offering exceptional **color uniformity**, **heat dissipation**, and **weather resistance**. A unique LED mask design in dark black **enhances contrast** and **image depth**, ensuring content stands out clearly in a variety of environments.

Each display includes **9 unified modules** with a standard module size of **320mm × 160mm**, allowing for consistent performance and easy maintenance. With a viewing angle of **140° (horizontal and vertical)** and an optimal viewing distance of over 4 meters, this display ensures wide, clear visibility in nearly any setting.

Control and content delivery are flexible and user-friendly. The display supports **Wi-Fi connectivity** for wireless media control via **PC** or **smartphone**, and also features **USB** program playback functionality, enabling standalone operation when needed. Additionally, an **external Ethernet port** is included to enable a **wired connection option**; ideal for environments where a stable and continuous connection is required for content upload, screen control, or Wi-Fi reset operations.

To ensure safe and reliable operation, the display is designed with a protection level of **IP33**, suitable for environments where protection from light dust and water spray is needed. It operates on **110V AC input**, offering excellent energy efficiency, with an **average power consumption of 350W/m²** (approximately **150 watts** for this unit). This balance of performance and power makes it suitable for **extended daily operation** while keeping energy costs manageable.

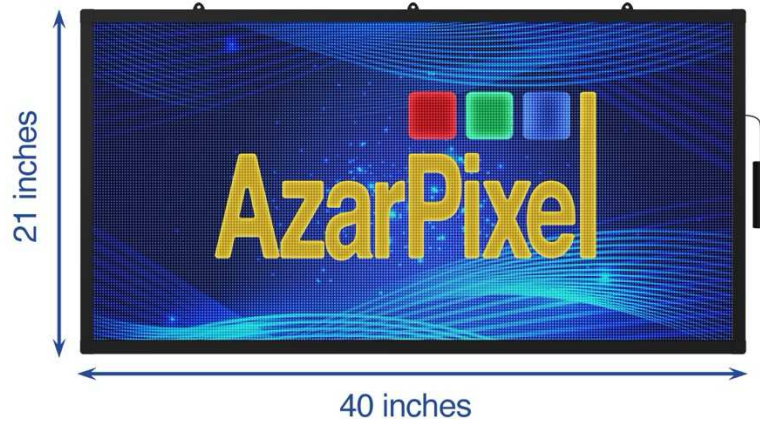
Communication range reaches up to **15 meters**, and the display boasts a lifespan of **100,000 hours**, ensuring long-term value and dependable performance.



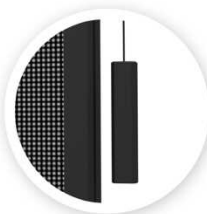
AzarPixel P4 LED Display

Dimensions, Components and Accessories

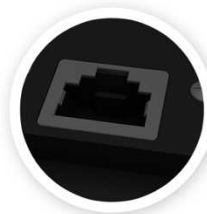
Product Size and Details



Free USB Drive



Wi-Fi External Antenna



Ethernet Port



4 mm Pixel Pitch



USB interface



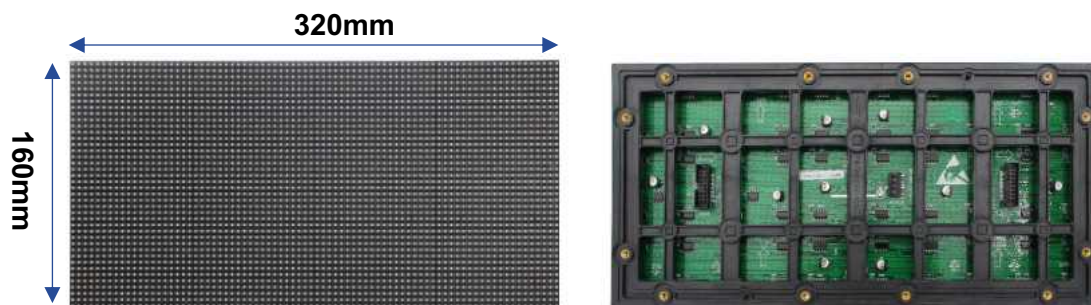
Mounting holder



US Plug

Panel Dimensions and Components

Note: As a **complimentary accessory**, a **USB drive** containing the manual, datasheet documents, and HD player software will be included in the packaging of the LED sign.



Module Front/Rear view and its Dimensions

Technical Specifications

AzarPixel P4 LED Display Specifications	
Pixel Pitch	4mm
Panel Resolution (WxH)	240 * 120 Pixels
Pixel Density	62500/m ²
Panel Dimension	101cm * 53cm
Screen Dimension	960mm * 480mm
Module Dimension	320mm * 160mm
Maximum Brightness	5,000nits
Pixel Configuration	1R1G1B (Full Color)
LED Configuration	SMD1921
Refresh Rate	3,840 Hz
Panel Average Power	144 W
Module Power Consumption (Avg / Max)	350W/m ² / 1,000W/m ²
Frame Material	Aluminum
Panel Weight	11.2Kg
Viewing Angle	140°/140°
Best Viewing Distance	>4m
Gray Scale	14-16Bit
Contrast Ratio	5000:1
Drive Type (Scan Rate)	1/10 Scanning
Input Voltage	110 VAC
Operating Temperature	20°C to 50°C
Humidity	10~95%RH
Front IP Rating	IP33
Life Span	100,000 Hours

Product Features

- **Vertical or Horizontal Installation:** The panel offers flexible positioning options and can be installed in either a standing (vertical) or horizontal orientation, depending on the customer's preference and application needs.
- **Flexible applications (Hanging and Ground capability):** This P4 display offers versatile installation options. Whether you require a suspended display for dynamic advertising or a stable ground-mounted setup, our robust frame and mounting systems ensure secure and adaptable installation.
- **High-Definition Display:** Experience stunning visuals with our P4 LED Sign, featuring over 5,000 nits of brightness, 14-bit to 16-bit grayscale, and a refresh rate exceeding 3,800Hz. These advanced specs deliver exceptionally sharp, smooth, and vibrant images on a symmetrical, uniform display, ensuring top-tier performance in any environment.
- **Impressive Viewing Experience:** Combining the unique mask design and dark black color with high contrast ratio of 5000:1, results in rich and vibrant images. Additionally, the flat and solid design of the screen minimizes glare and enhances visual comfort, allowing for wide viewing angles without eye strain.
- **Advanced Local and Remote Control:** The Ethernet port and Wi-Fi connectivity enable both traditional and advanced local and remote control of the display, allowing you to easily manage your display with versatile control options.
- **Built-in-media player:** It features a built-in controller with full multimedia capabilities, eliminating the need for external devices. This allows for standalone operation, enabling you to send the content (program file) directly from a **smartphone or PC** via wireless connection, making it ideal for quick and efficient deployment.
- **Wide media formats supporting:** It supports a wide array of video and image formats, including AVI, WMV, MP4, 3GP, ASF, MPG, FLV, F4V, MKV, MOV, DAT, VOB, TRP, TS, WEBM, SWF, FLV, GIF, BMP, JPG, JPEG, PNG, and more. This broad compatibility ensures seamless playback of diverse media content.
- **Reliable Performance:** The display's efficient heat dissipation system and IP33 protection rate, ensure consistent performance in various conditions.
- **Magnetic Module Connections:** This display engineered with precision magnetic modules which enables swift and effortless module removal and replacement, significantly reducing maintenance downtime.
- **Front and Rear module maintenance:** The modules are designed for both front and rear serviceability. For front maintenance, a simple plastic trim removal tool can be

used to safely detach the modules. Rear access is achieved by opening the back cover and gently pushing the module from behind.

This dual-access design significantly simplifies troubleshooting and repairs, especially in varied installation environments.

⚠ Important: *Do not open or service the panel unless you are a licensed and qualified electrician.*

- **Reliable Power Supply:** This LED panel is equipped with a highly reliable power supply engineered to provide a stable and consistent 5V DC output at 60A. It includes overload and short circuit protection to safeguard against electrical faults, which will contribute to its dependable and safe operation.

5. Packaging

Make sure to leave the product in its original packing box until you are ready to install.

Package Dimensions (L*W*H)	112cm * 64cm * 17cm
Package Material	Card Board Box
Weight	11.2 kg

6. Software Instruction

Setting Up the Software

1. Download Software via link

Download the latest version of **HDPlayer** software from the official **Huidu** website:
https://www.hdwell.com/Download/index_100000010736467.html

Once the download is complete, run the installer. Select your preferred language and click "OK" to continue.



Installer Language

2. Installation Interface

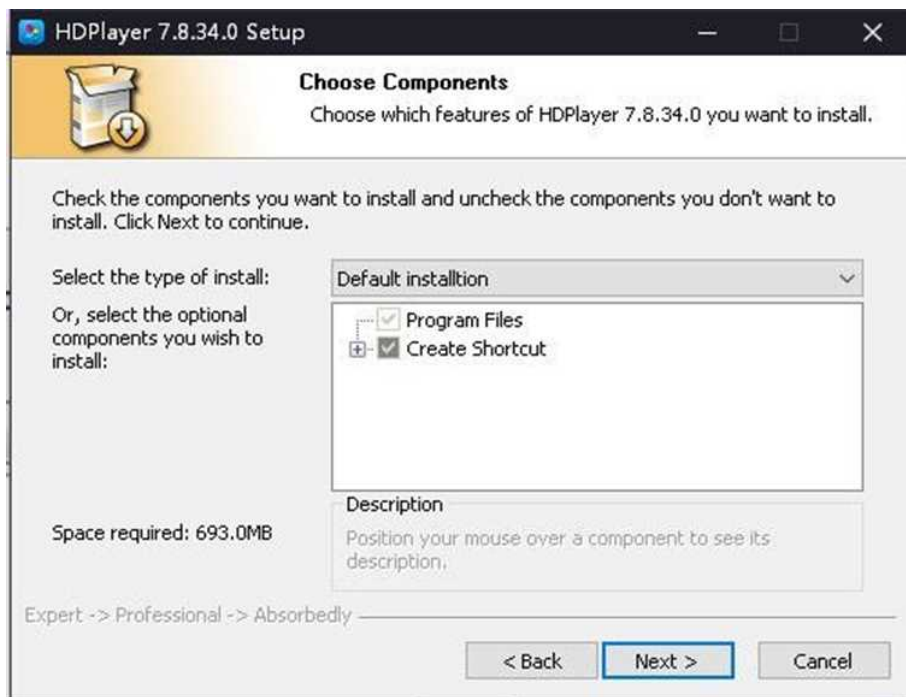
Click "Next".



Installation Guide

3. Choosing Installation Type

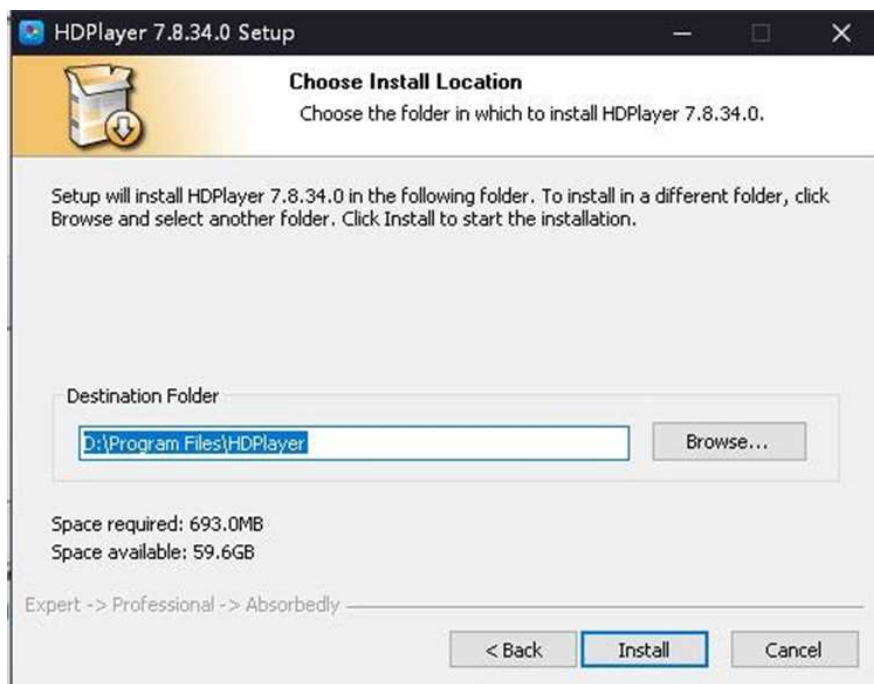
Leave it as default and Click "Next".



Installation type

4. Choose Installation Path

You can either keep the default installation path or choose your preferred destination folder. Then, click "Install" to proceed.



Installation Path

5. Completing the Setup Process

Leave the checkbox selected, then click **“Finish”** to complete the installation.



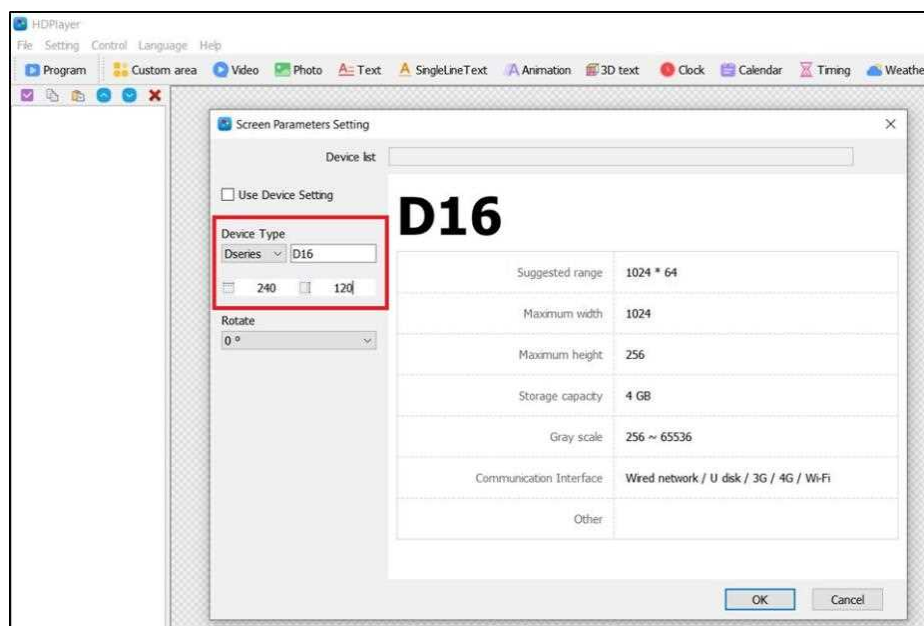
Finish Installation

6. Setting Screen Parameters

After installation, the software will be launched automatically. If it doesn't, open the **HDPlayer** software manually. Then, configure the correct screen parameters in the pop-up window.

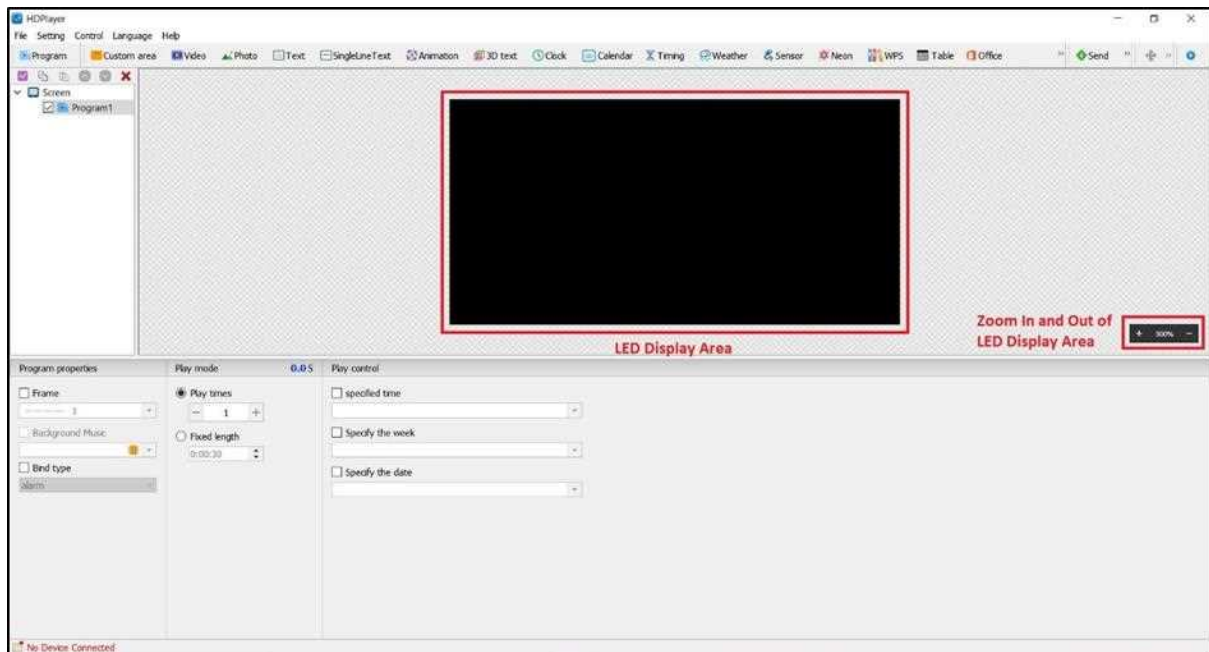
or: Click **【Setting】** → **【Screen Parameter Setting】**, into the parameter setting interface:

Device type: D16, width: 240, height: 120



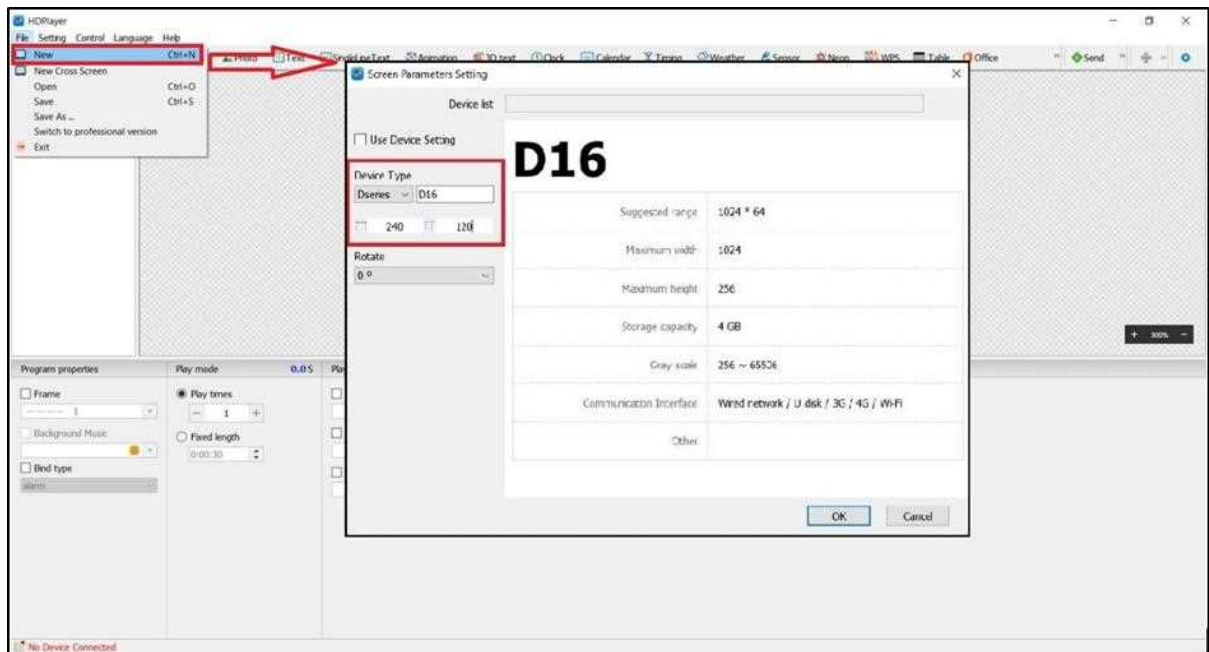
Setting the Screen Parameters

Then click **“OK”**. The software's display area will automatically adjust to match the proportions of the LED screen, allowing the user to begin editing programs.



LED display area

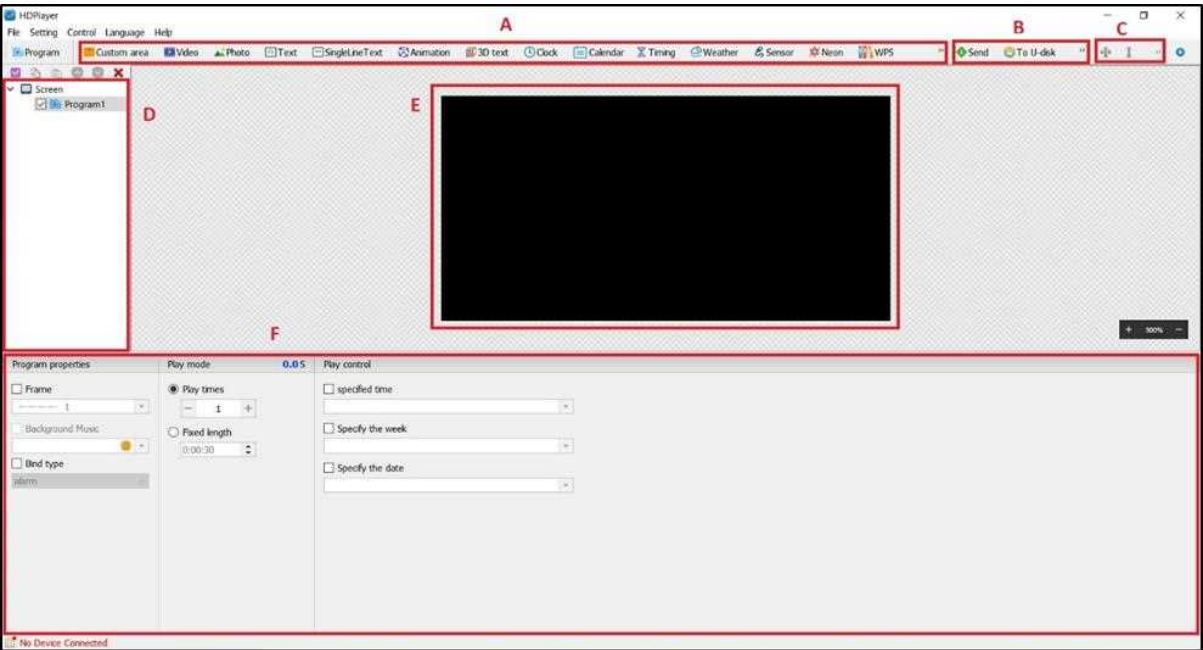
If the pop-up window doesn't appear, or if you wish to create a new screen and set the screen parameters manually, go to **“File” > “New”**



New Screen for LED display area

Program Creating

1. Program Areas and Functions Introduction



Program UI Areas

Area	Function
A	Program editing toolbar, you can use these tools to show what you want.
B	Send programs to the panel or save them to U-disk.
C	Expand the size according to the region.
D	Screen program layout tree area.
E	Screen Preview area.
F	Property setting area.

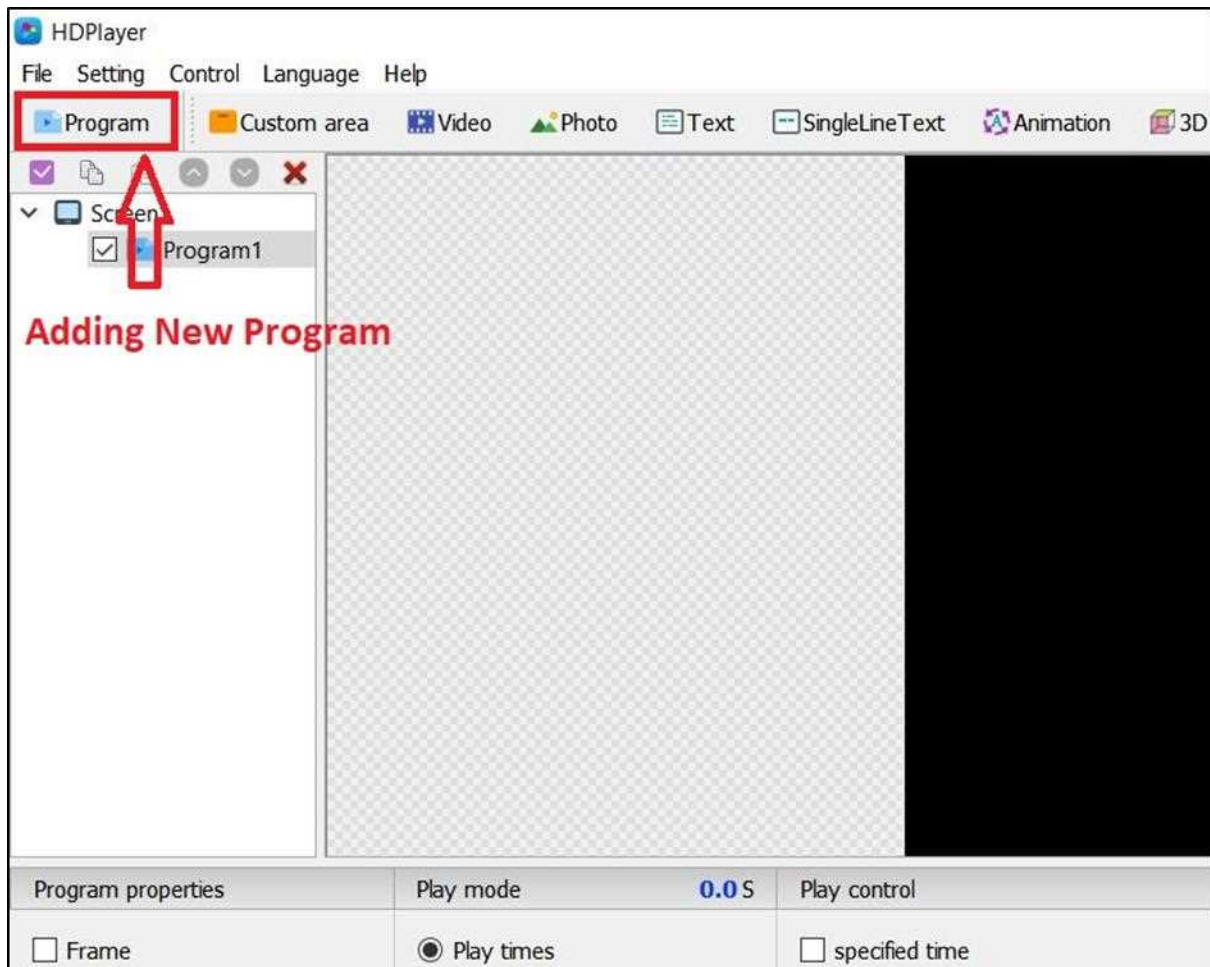
2. Adding programs

Click the “**Program**” icon on the toolbar to create a new program.

Note: You must first add a screen before creating a program. Each screen can contain multiple programs.

To manage your programs:

- Use the “**X**” button in the shortcut bar to delete and remove a selected program.
- **Right-click** on any program to rename, delete, add, copy, or move it as needed.



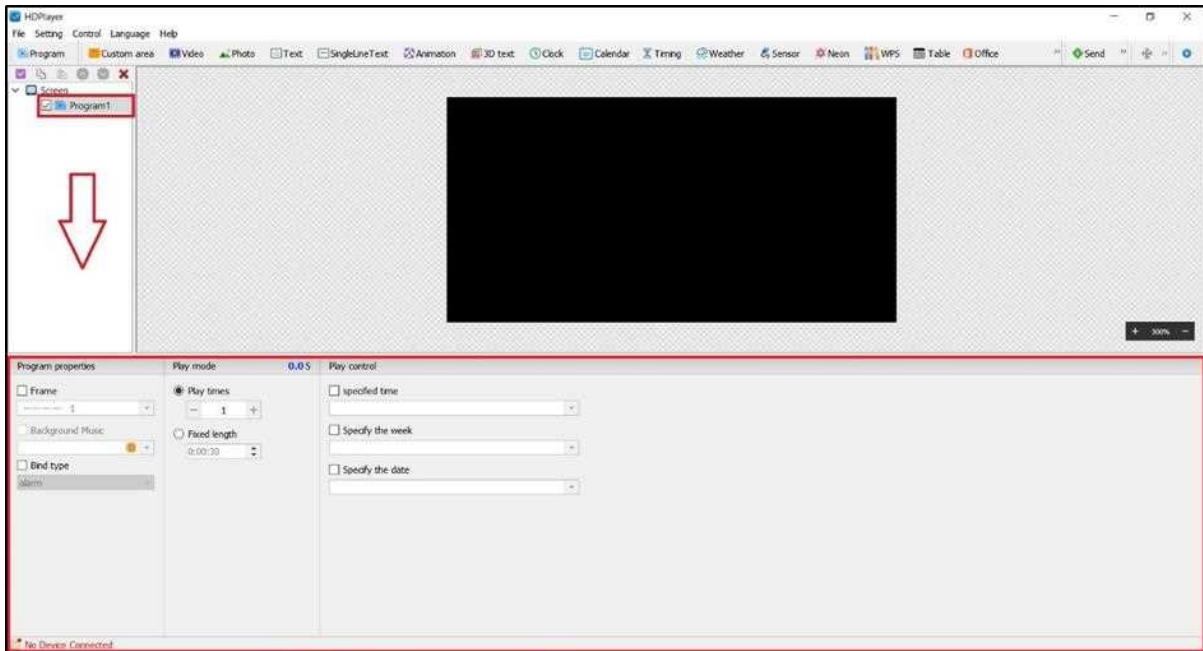
Adding A New Program

3. Program attribute

In the **Program Properties** section, you can configure the program's frame, number of play times, duration, and scheduled playback time. These settings must be sent to the control card for them to take effect.


- By selecting the “**Frame**” checkbox, you can add a colorful border to the screen display. You can customize the **line thickness** (from 1 to 8 pixels), choose one of the three **effect options**: 'Static', 'Rotate', or 'Twinkle', and adjust the **effect speed** to suit your design.

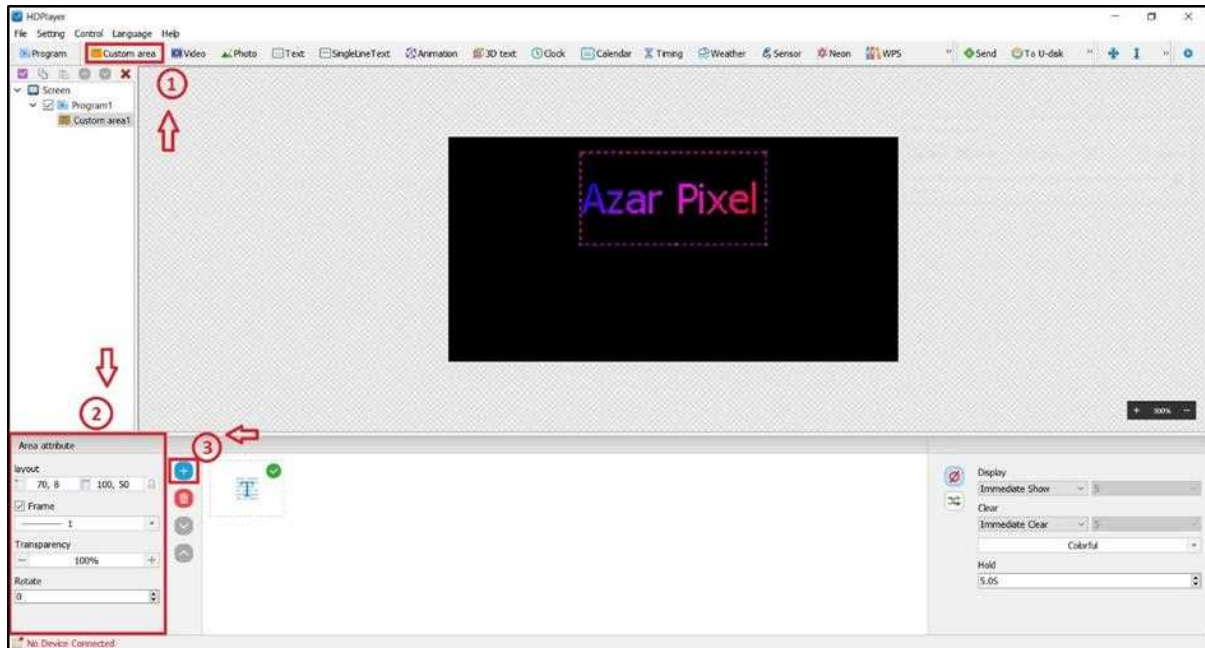
- In the **Play Mode** section, you can set a custom **"Fixed Length"** to define how long the selected program will be played (and repeated). Once this time is up, the system will automatically proceed to the next program in the screen's sequence.
- **"Specified Time"** refers to the scheduled time when the program will play. You can assign a specific 'start' and 'end' time, date and the days of the week that this program will be played.



Program Properties

4. Custom Area Creation

1. Click to create a **"Custom Area"**. This allows you to define a specific region on the screen for your content (if no custom area is created, the **entire screen** will be used as the default display area).
2. Set the Layout (in pixels), Frame (area border), and adjust the area's position and size:
 - Manually set the X / Y coordinates, **width**, and **height**.
 - **Drag** or **stretch** the area directly within the playback window.
 - Use the **quick toolbar tools**  to automatically stretch and adjust the custom area's width, height, or both to fit the full display area.
 - You can also adjust the **transparency** and **rotate** the selected area to suit your design needs.
3. Click to **add content** such as **text**, **animations**, and more to the custom area (the contents will play in sequence, and you can adjust the playback order by drag and moving each content icon within the list).

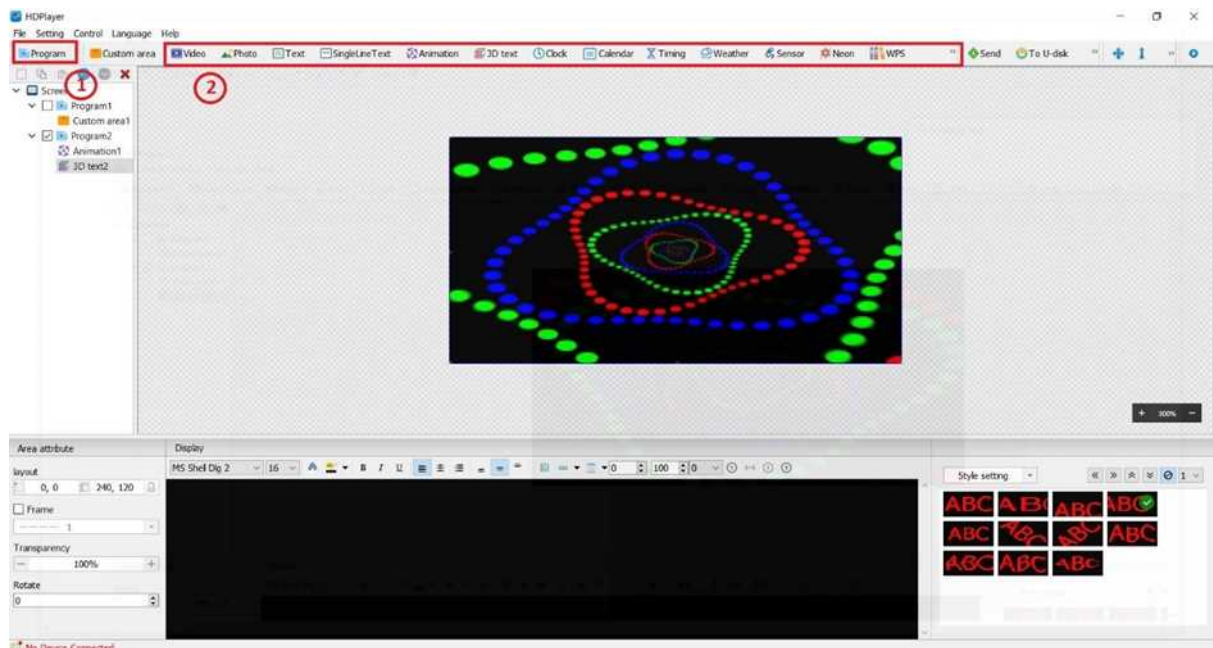


Custom area creation

5. Add Videos, Pictures, Animation, Text and other source files

Click “**Program**”, then select the corresponding icon from the toolbar to add various source files such as **video**, **images**, **animations**, **text**, **Excel**, **Word**, **PPT**, and more. To delete a source file, simply click the red “X” icon on the shortcut bar.

You can create individual programs for different purposes and freely combine elements like **text**, **animations**, and other media to suit each program's unique design.

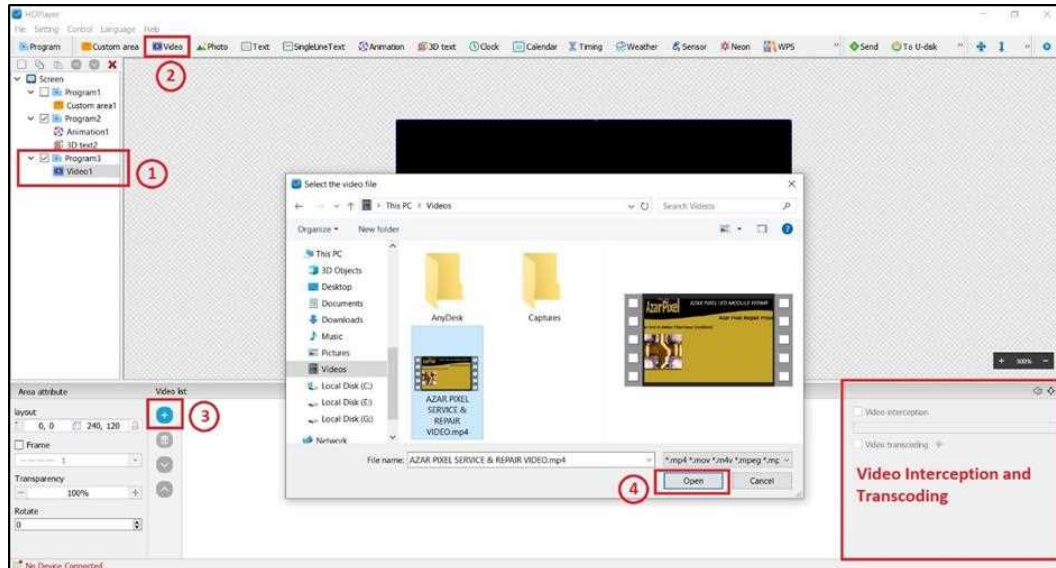


Adding Source Files

- Add Video

Click on a **“Program”** (or create a new one), then select the **“Video”** icon from the toolbar to insert video files.

You can add multiple videos within a single program. The LED sign will automatically play them in sequence.



Video Attributes

Note: For videos with unconventional encoding, please ensure that **“Video Transcoding”** is checked. Wait for the transcoding process to complete before sending the content to the display; otherwise, the video may fail to play properly.

- Add Photo

Click on a **“Program”** (or create a new one), click the **“Photo”** icon in the toolbar to insert images into your program. You can add **multiple pictures** to a single program, and the LED sign will **play them sequentially**.

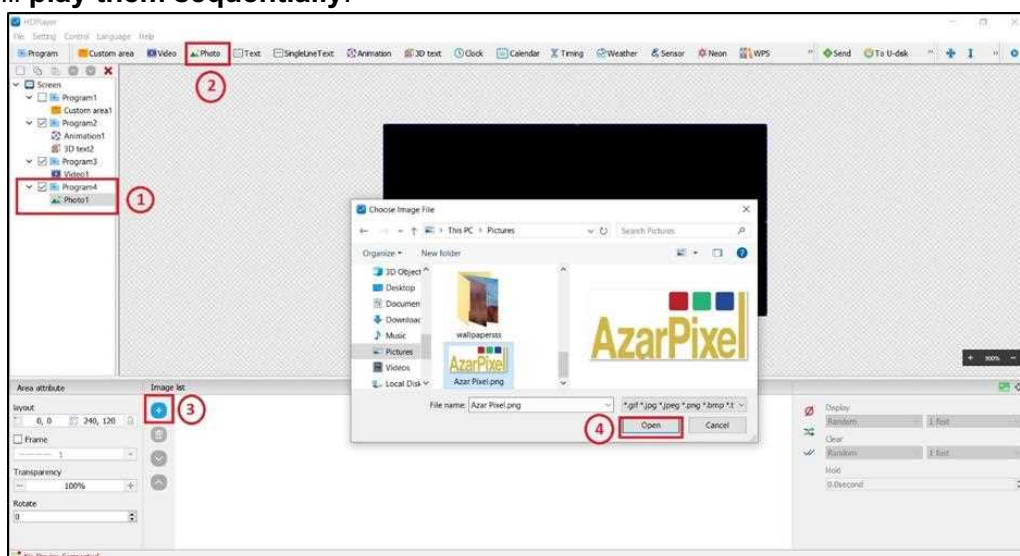
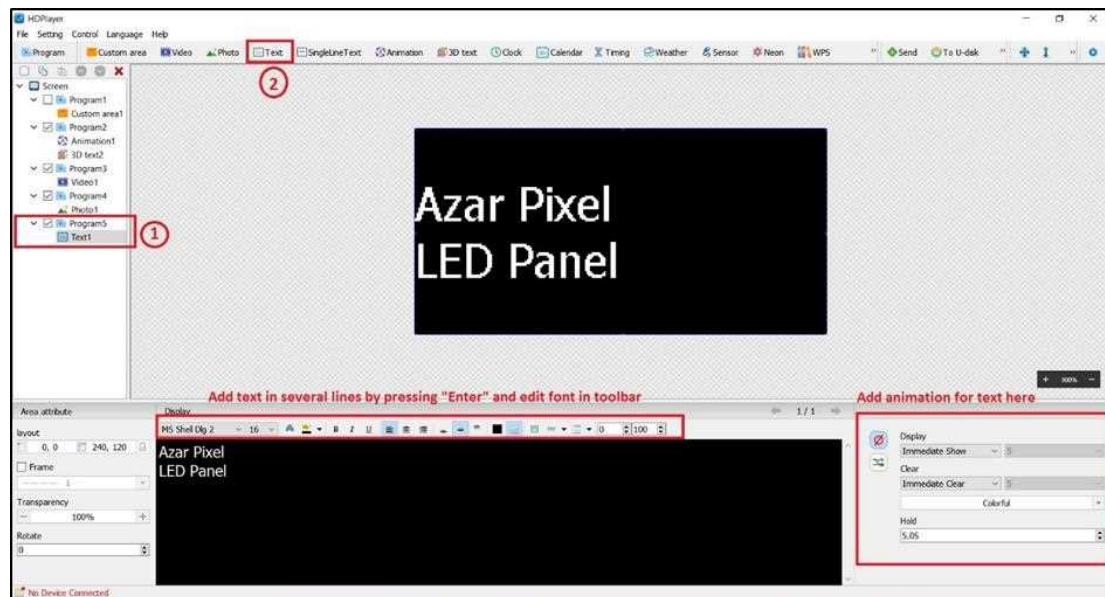


Photo properties

• Add Multiple Lines Text

Click on an existing “**Program**” (or create a new one), then click the “**Text**” icon to add multiple lines of text. To delete the multi-line text, simply click the red “**X**” button on the shortcut bar.

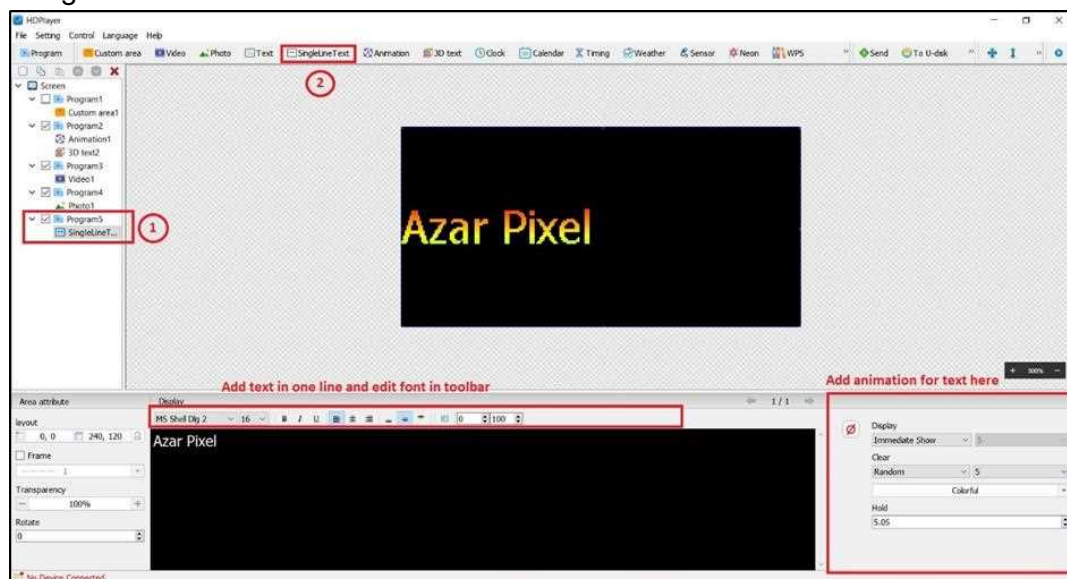


Add and Edit Multi-Line Text

You can customize the text with various display effects (40 types of **display in** and **clear out** effects), adjust the **display speed**, set the **display duration**, and apply other text formatting options.

• Add Single Lines Text

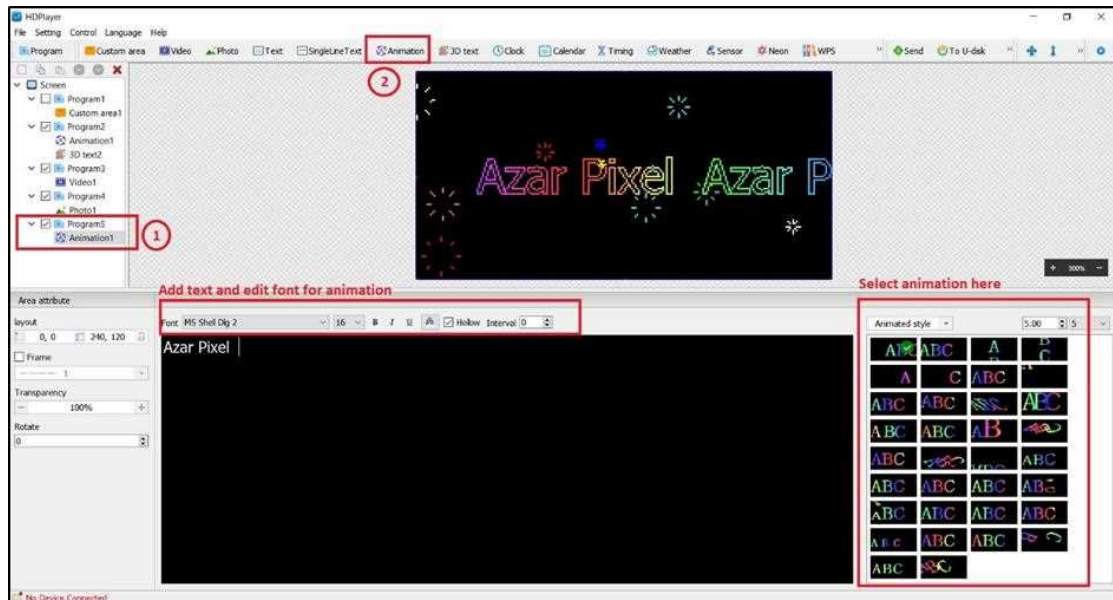
Click on an existing “**Program**” (or create a new one), click the “**Single Line Text**” icon to add a single line of text.



Add and Edit Single Line Text

- **Add Animation**

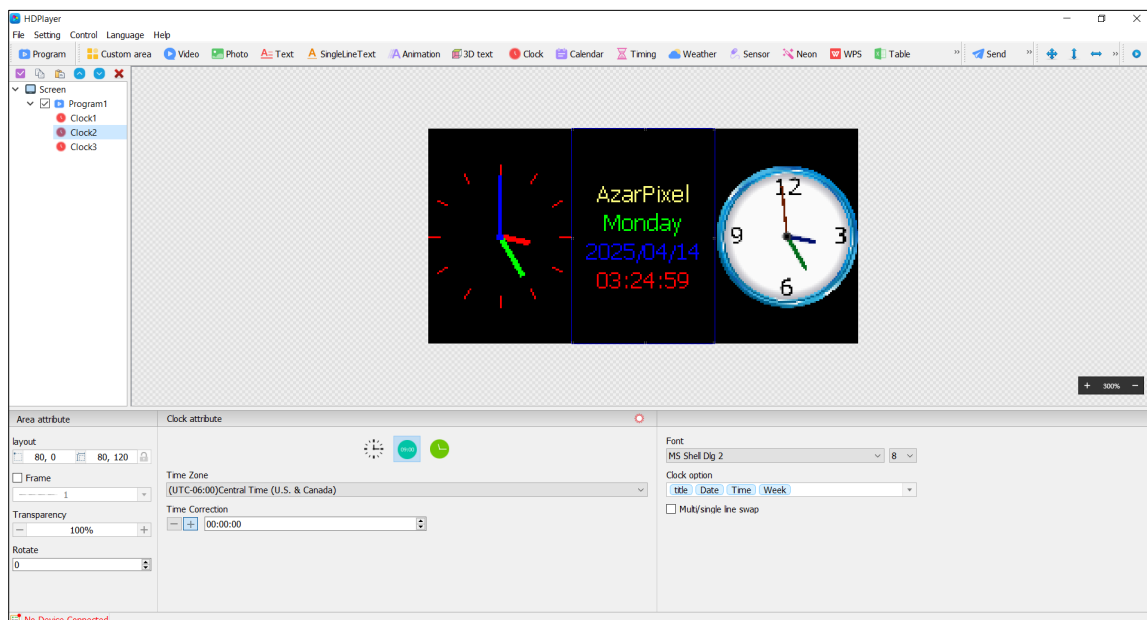
Click on an existing **“Program”** (or create a new one), then click the **“Animation”** icon to add **animated text**. Then add your text in the text box, you can choose your preferred animation from the list on the right side of the display.



Add and Edit Animation

- **Add Clock**

Click the **“Clock”** icon to add a clock display.

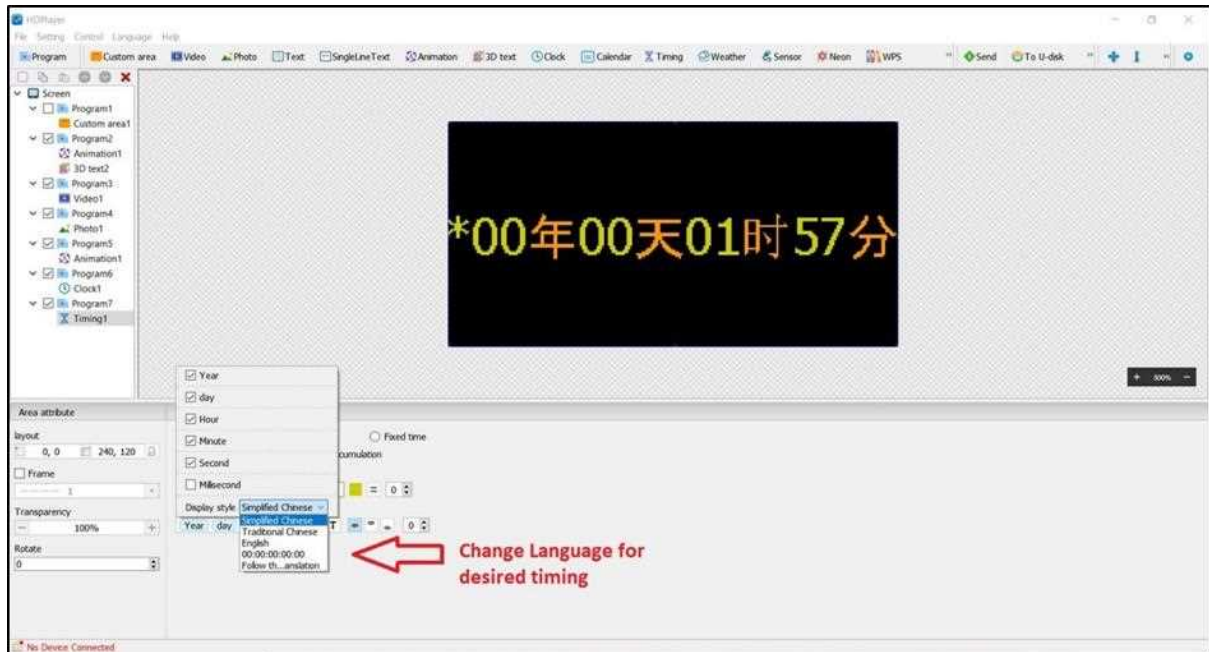


Add and Edit Clocks

Supports three clock types: **analog** clock, **digital** clock, and **picture** clock. You can set different **time zones**, and the time can be corrected if there's any deviation. Additionally, you can customize the description text, spacing, font type, font size, and more

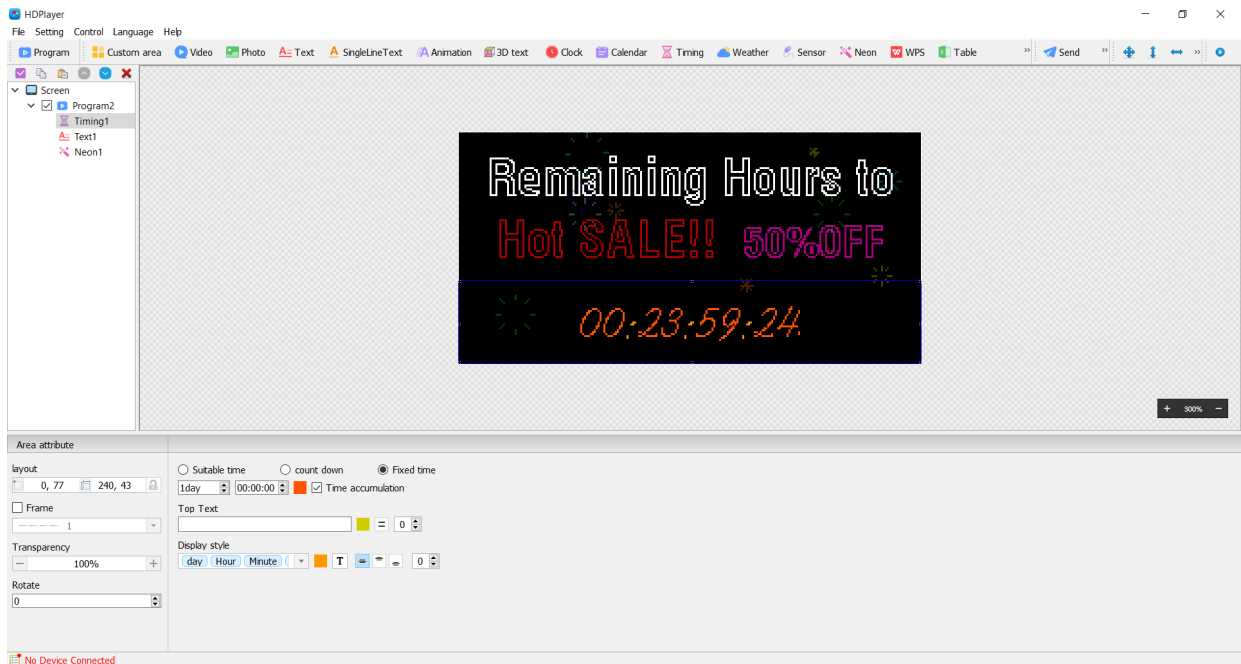
- Add Timing

Click the “Program” icon, then click the “Timing” icon to add a scheduled (timing) program.




Time attributes

You can configure the timing mode, display mode, goal time, as well as customize the spacing, font type, font size, color, and more.



Timing Editing Result

6. Preview of the Result

Once you’ve finished designing your content, you can preview the result before sending it to the LED panel. Click the “Play” button  located at the top-right corner of the software

to see how your program will appear on the display.

When you're ready to exit the preview, simply right-click on the preview screen and select "**Stop**" to return to the main software interface.



The Preview Screen

Program Uploading

After you have finished editing your content remember to save it from the File menu. It is important to have a backup of the program you built to prevent losing it. Then, you can easily send it to the LED screen for display. The control card supports program updates via both "**Wi-Fi**" and "**USB drive (U-disk)**", giving you flexible options for content management. Using **Wi-Fi**, you can update the display directly from your **phone** for quick and convenient operation.

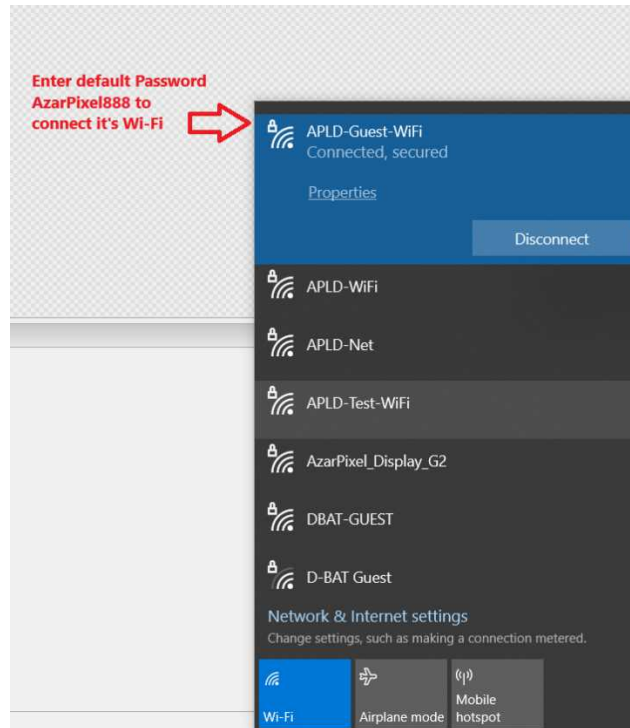
Additionally, the system supports **memory expansion through a U-disk**, allowing you to store and play a wide variety of content with ease. This ensures that your LED display remains versatile and user-friendly, whether you are updating content wirelessly or using a USB drive for offline playback.

1. Send Program via Wi-Fi

The **Wi-Fi SSID** for your LED panel is indicated on a **label attached to the panel's frame or it's outer package**. You can use this **SSID** to connect your device via **Wi-Fi**. The default Wi-Fi password is "**AzarPixel888**". If desired, you can change both the **SSID** or the **password** through the HDPlayer by connecting **via the Ethernet port and cable**.

First, Connect to the LED Screen's Wi-Fi Network

- On your PC or smartphone, open your Wi-Fi settings (showing available Wi-Fi connections).
- Find and connect to the network whose name is printed on the panel's frame or its outer packaging. This network name could be something like "**D16-22-A073D**" or "**APLD-Guest-WiFi**," as shown in the picture below.
- When prompted, enter the default password: "**AzarPixel888**".



Connecting to the D16's Wi-Fi Module

Second, Open the Control Software

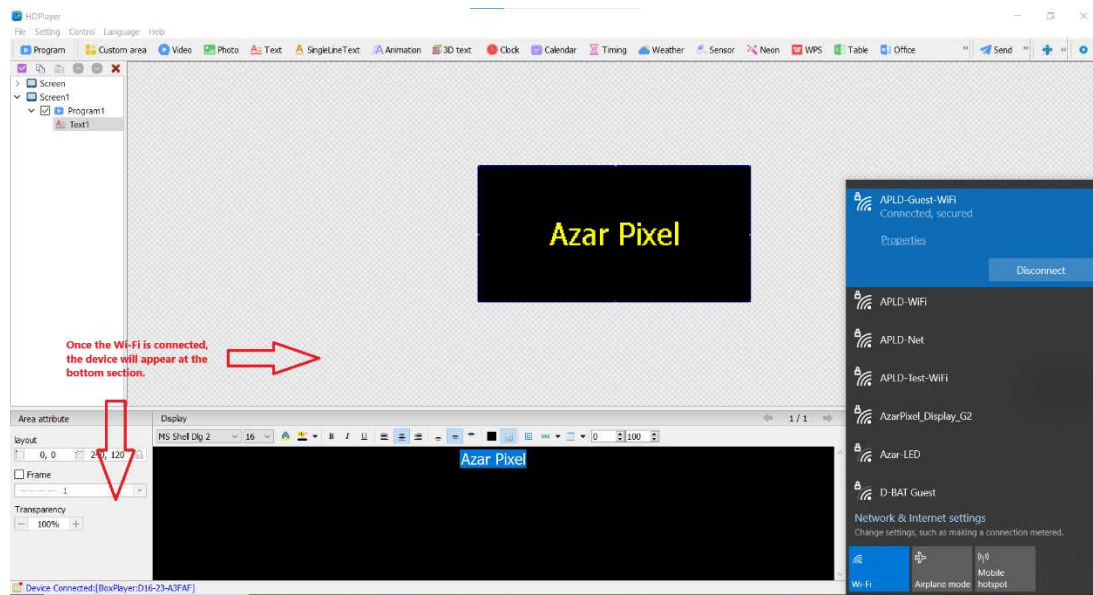
- Launch the LED display control software on your device.
- Once connected to the Wi-Fi network, the device labeled **D16** will appear automatically in the software's device list (in "**Control**" Tab and "**Device Information**" window)

Third, Send Your Program

- Select the **D16** device from the list.
- Prepare your content (images, videos, text, etc.) and ensure it is ready for upload.
- Use the software's **send** function to upload or publish the program to the LED screen via Wi-Fi.
- Wait for the upload to complete; the screen will display your new content.

Note:

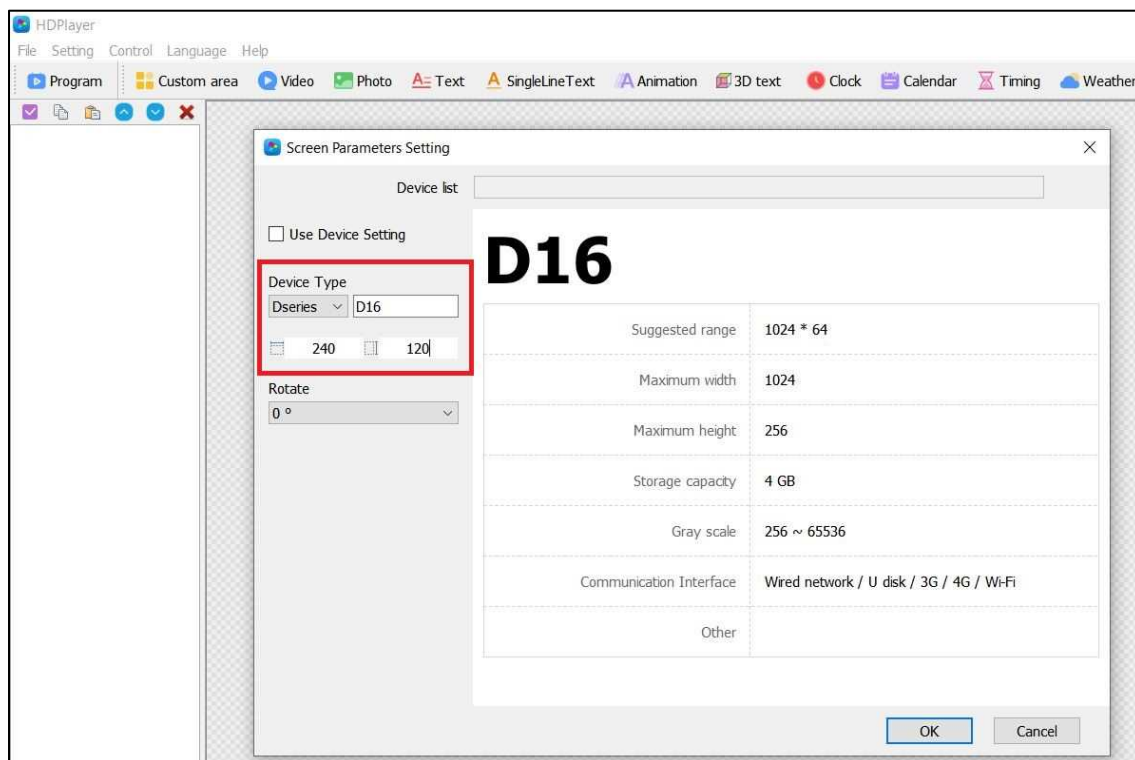
- You can perform this process easily using either a PC or a smartphone, as long as you are connected to the correct Wi-Fi network.



Successful Connection

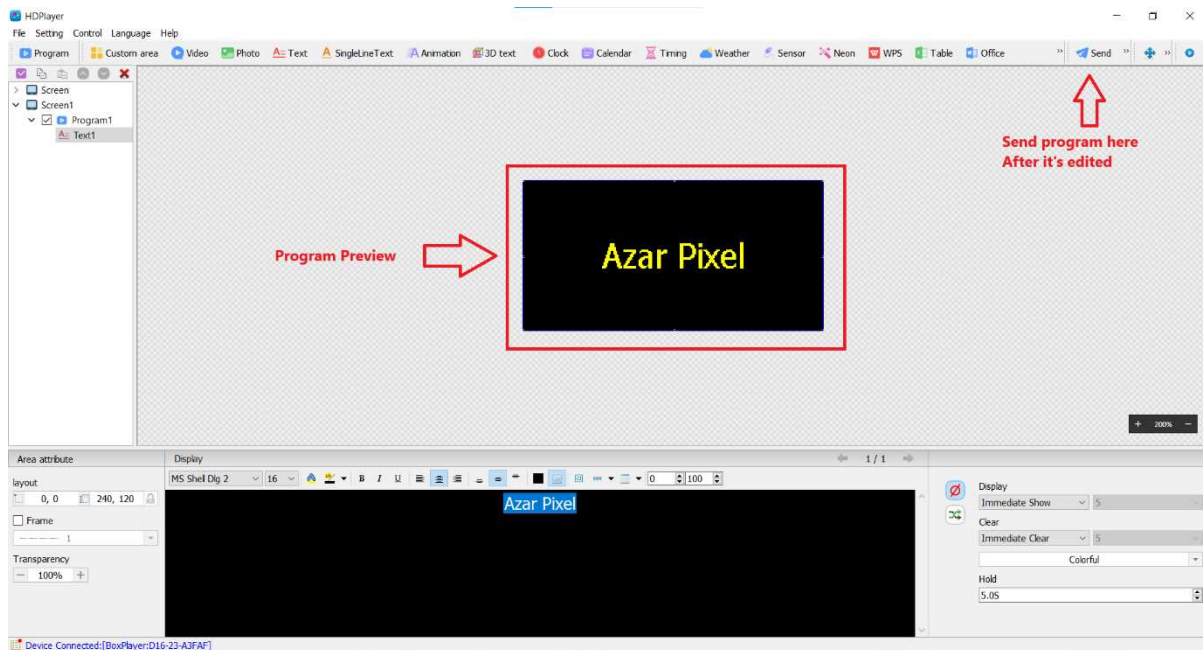
When you click **"Setting"** → **"Screen Setting"**, you will enter the screen parameter configuration interface. Here, carefully verify that all parameters-such as device type, display width, height match those already configured on the LED display hardware.

If you are unsure about any parameter, refer to **Chapter "6. Setting Screen Parameters"** of this manual for detailed instructions on correct values and adjustment procedures (if you have already done that, please ignore this part and proceed).

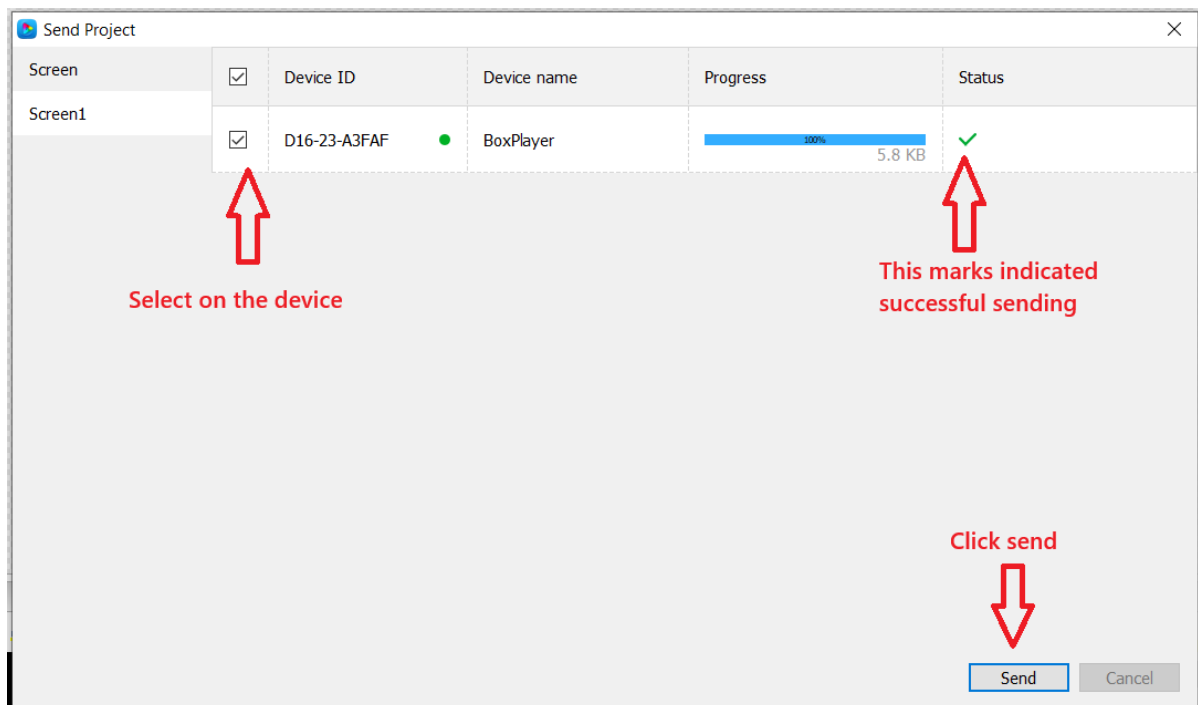


Screen Parameter Setting

After configuring the display parameters, click the **“Send”** icon on the toolbar to upload the content to the LED screen. Wait for the upload to complete; the display will then show the new program.



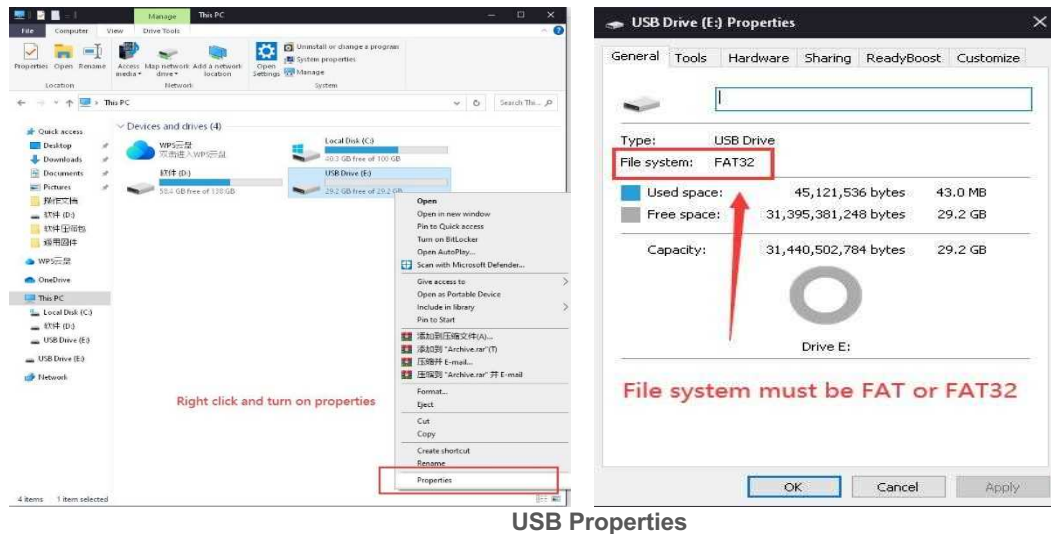
Sending Final Program After Design



Sent successfull

2. Send program via U disk

The USB drive must be formatted in FAT or FAT32 first. You can insert the USB into your system to check and reformat if necessary.



USB Properties

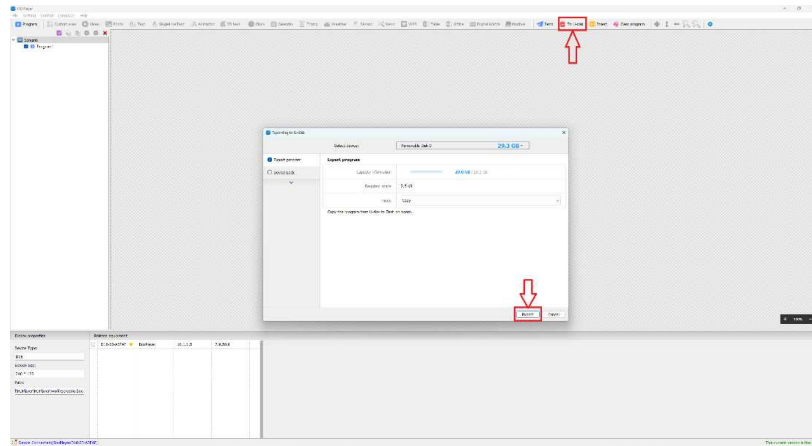
If it is not, to ensure compatibility with your LED display, the USB drive must be formatted in FAT or FAT32 file system. You can reformat your USB drive using a computer:

- Insert the USB drive into your computer.
- Open File Explorer (Windows) or Finder (Mac).
- Right-click on the USB drive and select “**Format.**”
- Choose “**FAT**” or “**FAT32**” as the file system from the options provided.
- Start the formatting process.

Note:

- **Formatting will erase all data on the drive.** Be sure to back up any important files first.
- After formatting, your USB drive will be ready for use with the LED display.

Then, insert the U-Disk into the computer running the HDPlayer control software. Open the software, select the **program** you want to send to the panel, click on “**To U-Disk,**” and then click the “**Export**” button.



Sending Program File to USB

- Then insert the USB drive into the LED panel's USB port.
- Wait until the screen displays “**Copy Complete.**”
- Once the message appears, safely remove the USB drive from the screen

System Control

The LED display control software provides a comprehensive set of system management features to optimize performance and flexibility:

- **Device Lock Setting:** Restricts unauthorized access and prevents unintended changes to system configurations.
- **Brightness Setting:** Allows manual or automatic adjustment of screen brightness to suit different lighting conditions, ensuring optimal visibility and energy efficiency.
- **Time Correction:** Synchronizes the internal clock of the display for accurate scheduling and timed operations.
- **Play Mode Setting:** Enables selection and customization of playback modes, such as continuous loop or scheduled content display, to meet various content management needs.
- **Time Switch:** Supports automatic power on/off scheduling, allowing the display to operate only during specified hours, which helps save energy and extend equipment lifespan.

1. Brightness setting

Connect to the control card's Wi-Fi network. In the software, click “**Control**” on the menu bar and select “**Brightness Setting.**” You can adjust the brightness using one of three options:

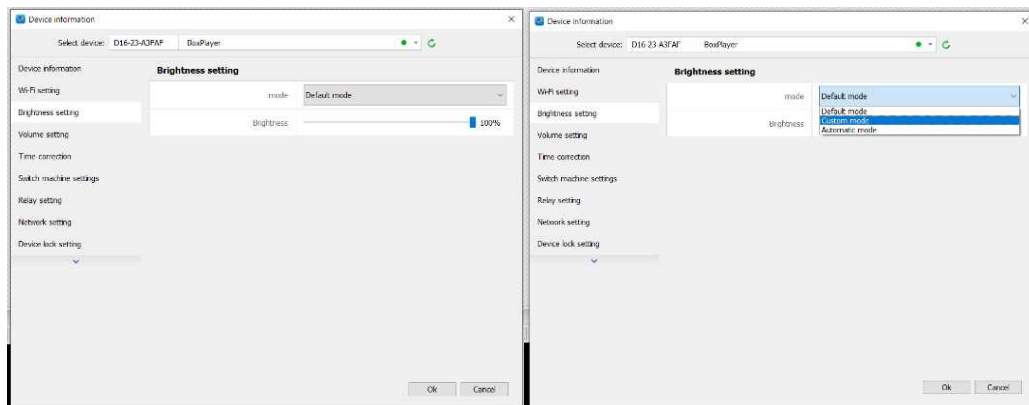
1. Default Mode
2. Custom Mode
3. Automatic Mode

Choose the desired mode to set the brightness according to your needs. Adjustments can be made manually or automatically, depending on the selected mode.

Note: Although 0–100% brightness adjustment is available, we highly recommend keeping the brightness at or below 70%. Operating the sign at lower brightness levels will help extend the LED display's lifespan and maintain long-term performance

1) Default Brightness Adjustment

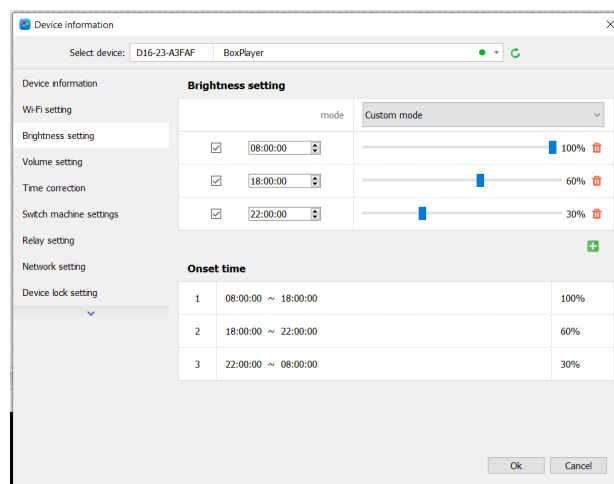
Select Default Mode, then click OK to apply the setting. A pop-up message will confirm “**Get brightness successfully.**”



Default Brightness Adjustment

2) Custom brightness

- After setting the desired time and brightness, click “**OK**”.
- A confirmation message, “**Set successfully**”, will appear at the bottom, indicating the settings have been saved to the controller.
- By default, the software offers three user-defined brightness schedules, which can be edited to match your preferred time periods and brightness levels.
- To add more customized brightness schedules, click the “**+**” button to create a new entry.



Custom brightness

3) Automatic Adjustment

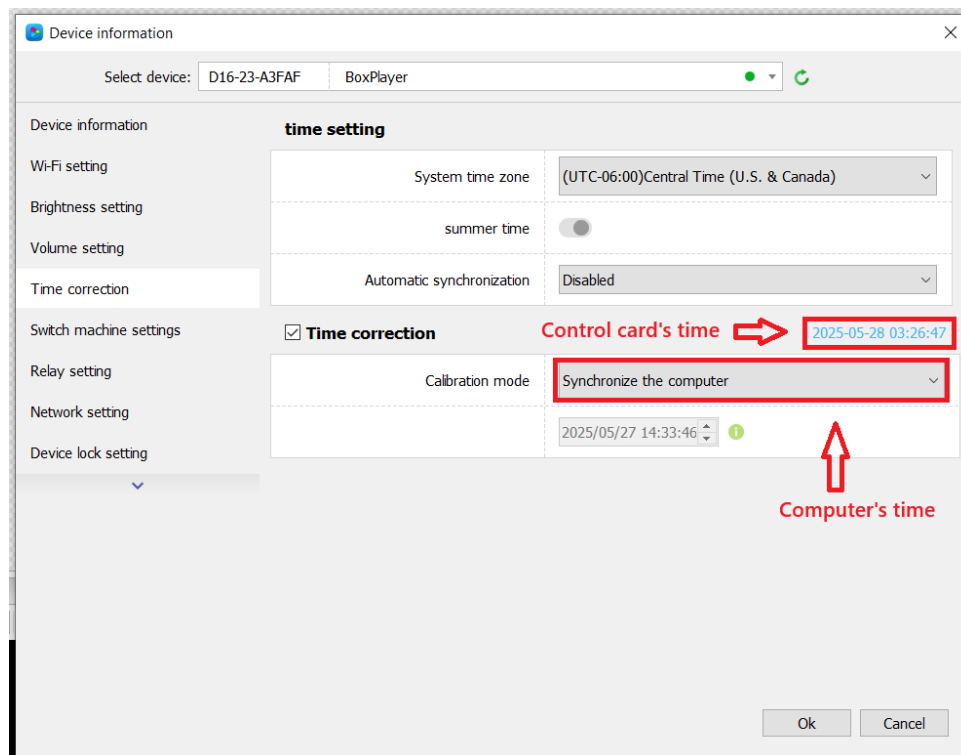
Note: This function is not available as there is no external brightness sensor to support automatic adjustment.

2. Time Correction

After connecting to the device's Wi-Fi, select the ID of the controller that requires time correction. A message saying 'Acquisition time is successful' will appear at the bottom of the screen, indicating that you can proceed with time synchronization. The system will automatically adjust the time based on the time zone settings of both the computer and the controller.

1) Synchronize the Computer:

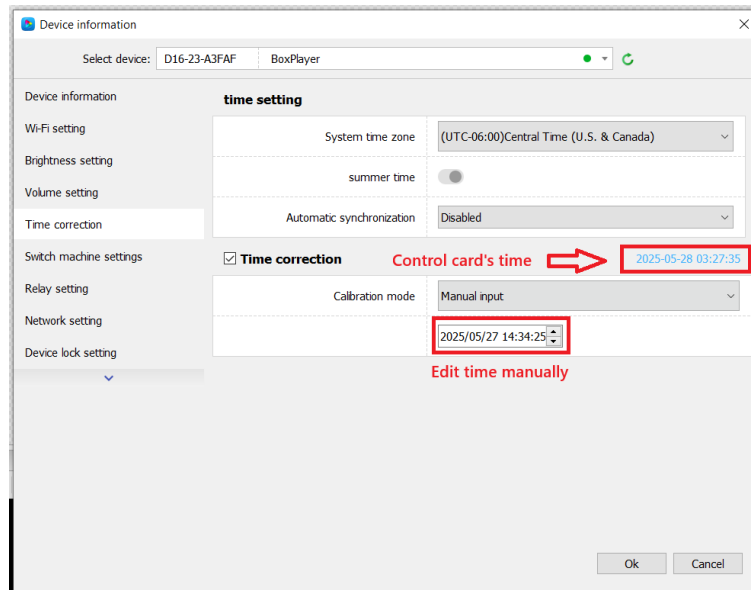
This option syncs the controller's time with your computer's current time. Click **"OK"**, and a message 'Set Successfully' will appear in the lower-left corner, confirming the time has been updated successfully.



Synchronous Correction

2) Manual Input

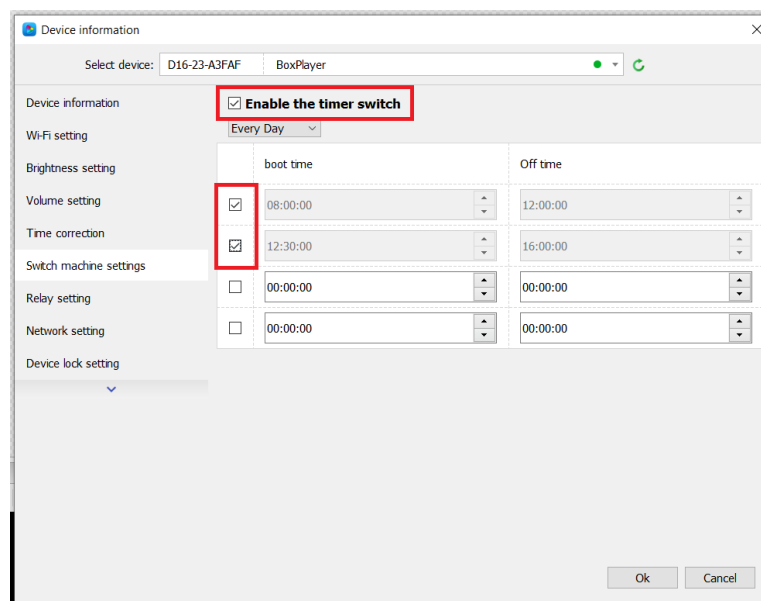
After setting the time, click the **"OK"** button. A message saying 'Set Successfully' will appear at the bottom left corner, indicating the time has been set successfully.



Custom Time Adjustment

3. Switch machine settings

The timer switch setting allows the control card to either display a black screen or play content during a specified time. This function only disconnects the video signal transmission; the screen itself remains powered.

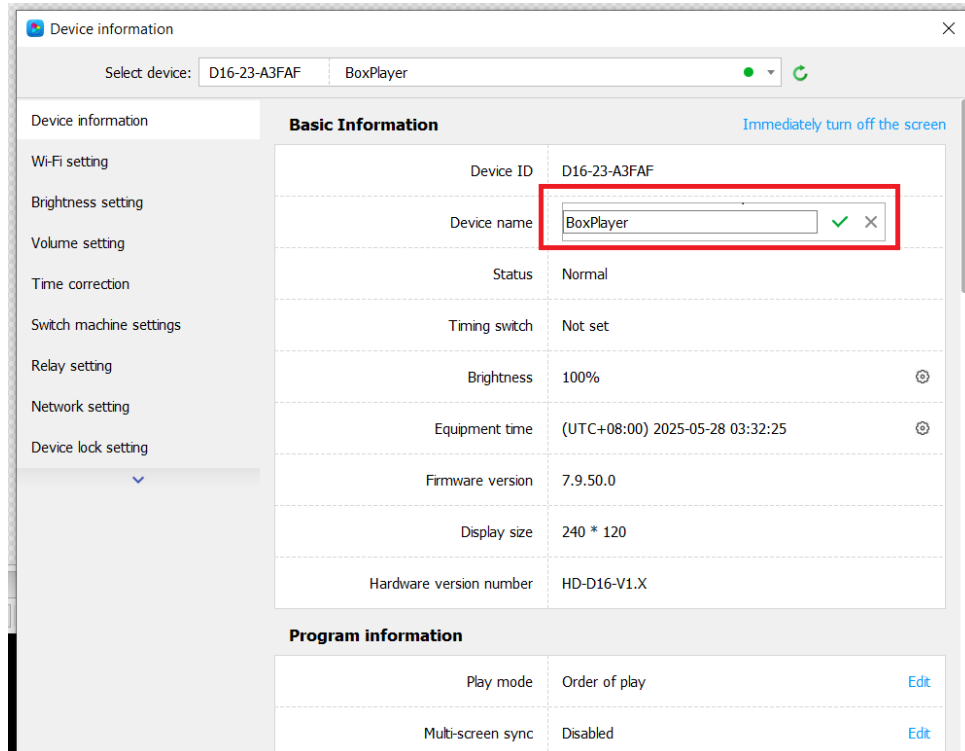


Switch machine settings

4. Update device name

To help identify different control cards more easily, you can rename the control card via **[Control]** → **[Device name]**. The default device name is *BoxPlayer*.

As shown in Figure, select the appropriate control card ID, enter the desired new name in the name text box, click the check sign and click **“Update Device Information.”** A message will appear in the task status confirming the update was successful.



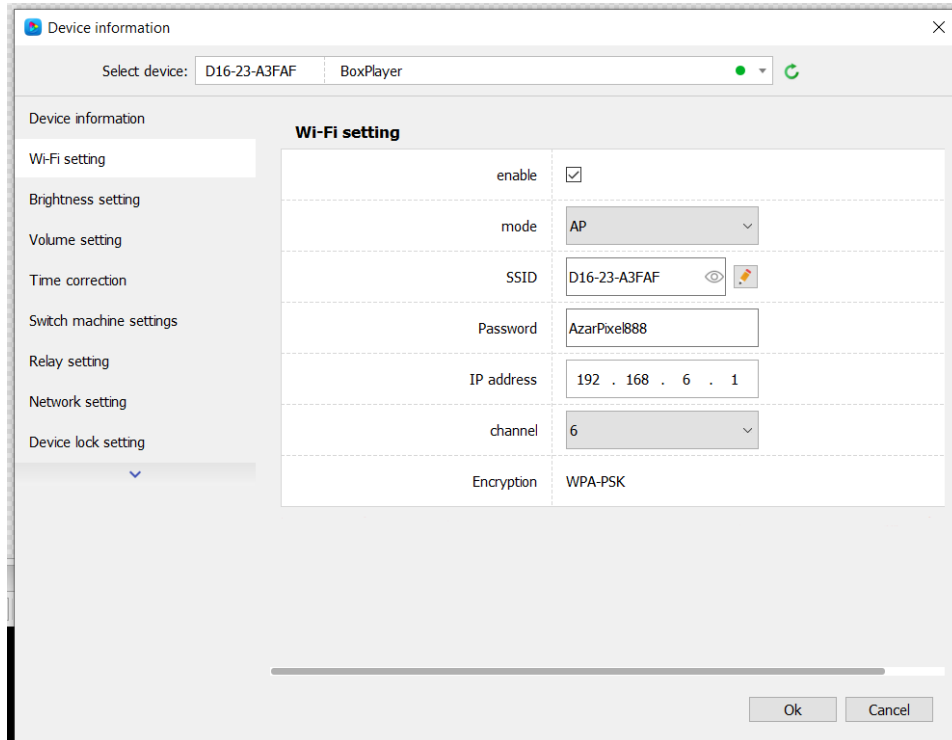
Update Device name

5. Wi-Fi settings

A **Wi-Fi Settings** tab will appear under **[Control] → [Device Information]**. In this tab, you can configure the Wi-Fi password, IP address range, and other settings when using **AP mode** (Access Point mode), as shown in Figure. In **Station mode**, the control card can connect to an existing wireless network. You can manually select the Wi-Fi network to join, as shown in Figure.

Note: This tab will not appear if the control card does not have a Wi-Fi module connected.

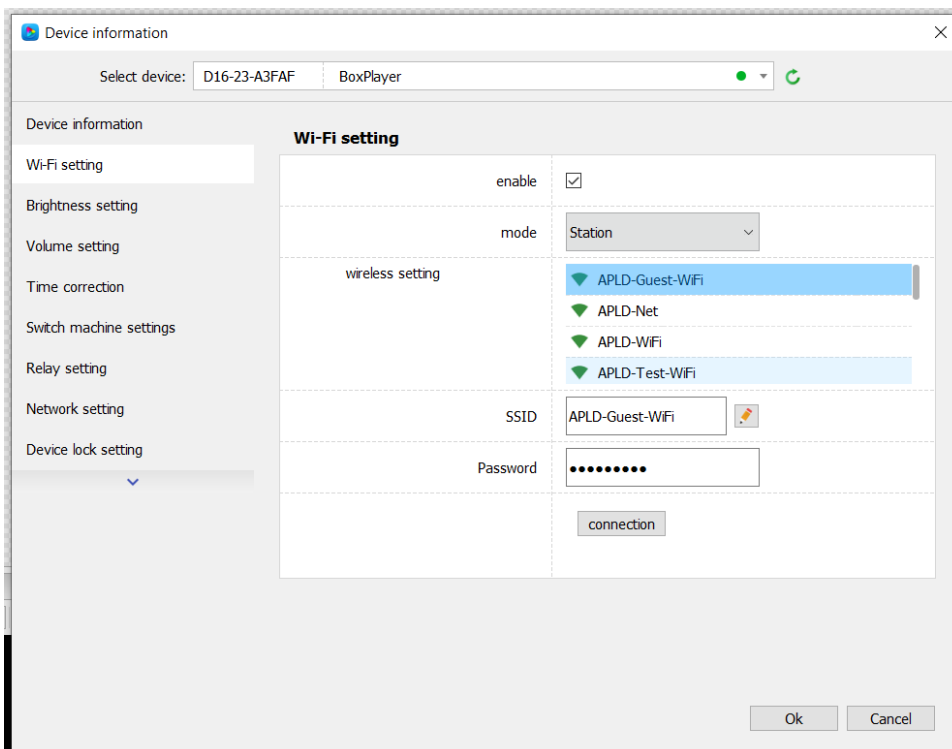
Note: Remember to disconnect the Ethernet Cable once you connect via Wi-Fi in AP or Station Modes.



The screenshot shows the 'Device information' window with the 'Wi-Fi setting' tab selected. The 'mode' is set to 'AP'. The SSID is 'D16-23-A3FAF', the password is 'AzarPixel888', the IP address is '192 . 168 . 6 . 1', the channel is '6', and the encryption is 'WPA-PSK'.

Wi-Fi setting	
enable	<input checked="" type="checkbox"/>
mode	AP
SSID	D16-23-A3FAF
Password	AzarPixel888
IP address	192 . 168 . 6 . 1
channel	6
Encryption	WPA-PSK

AP mode setting



The screenshot shows the 'Device information' window with the 'Wi-Fi setting' tab selected. The 'mode' is set to 'Station'. The 'wireless setting' section shows a list of available networks: 'APLD-Guest-WiFi', 'APLD-Net', 'APLD-WiFi', and 'APLD-Test-WiFi'. The SSID is 'APLD-Guest-WiFi' and the password is masked with dots. A 'connection' button is visible below the password field.

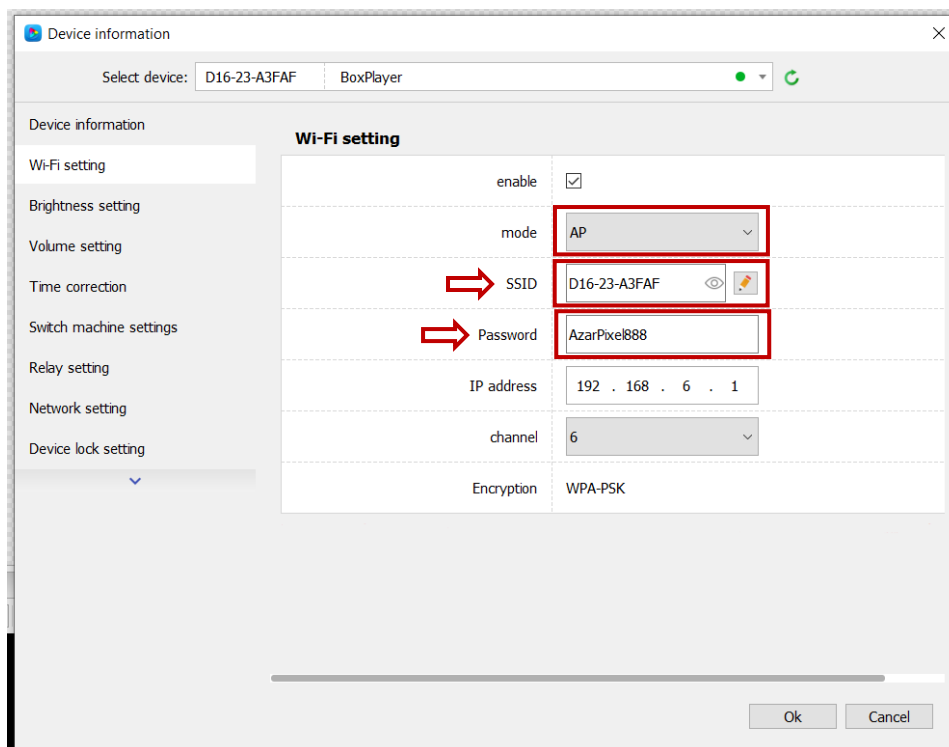
Wi-Fi setting	
enable	<input checked="" type="checkbox"/>
mode	Station
wireless setting	<ul style="list-style-type: none"> APLD-Guest-WiFi APLD-Net APLD-WiFi APLD-Test-WiFi
SSID	APLD-Guest-WiFi
Password
connection	

Station mode setting

6. Wi-Fi Password/SSID Reset

In case of an emergency where the Wi-Fi fails to connect, or if you need to change the SSID or Wi-Fi password, you can follow the steps below as a troubleshooting solution:

- ✓ Connect your **PC** to the LED panel via the **Ethernet port** using an **Ethernet cable**.
- ✓ Navigate to the "**Wi-Fi Setting**" section under: **[Control]** → **[Device Information]**.
- ✓ Set the "**Mode**" to "**AP**" (Access Point).
- ✓ You can now update both the **SSID** and **password** of the panel's Wi-Fi access point to your desired values. Click "Ok".
- ✓ Once updated, disconnect the Ethernet cable and connect your PC or mobile device to the panel's Wi-Fi using the new credentials.



Wi-Fi SSID or Password Reset

7. Mobile app

Download “LedArt” control software on mobile phone

You can download the **LedArt** control app on your mobile phone from the **Google Play Store** or **Apple App Store** by searching for “**LedArt**”. Alternatively, scan the QR code below to download it directly. The app allows you to control your LED display conveniently via your smartphone, with no additional hardware required.

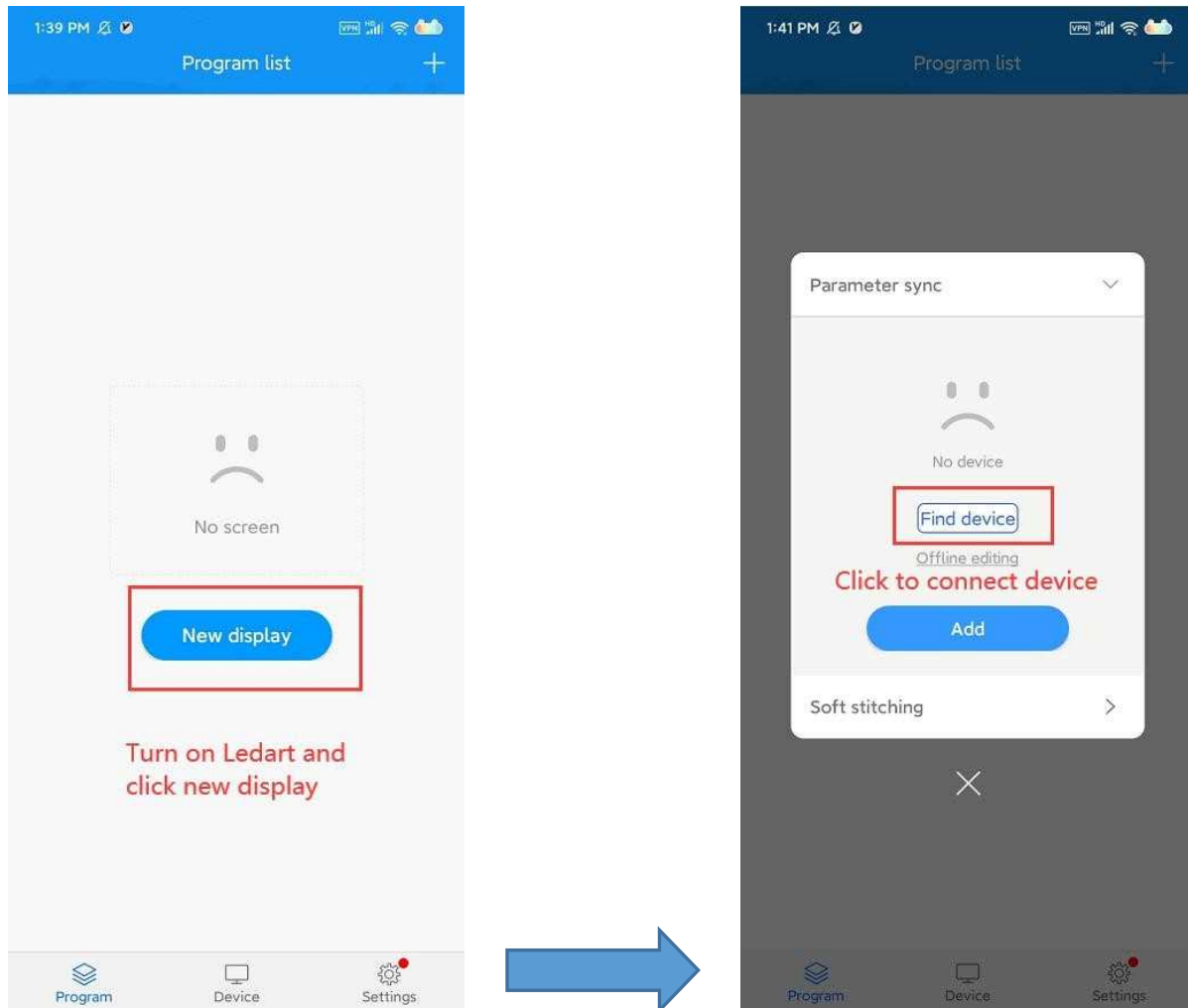


QR code for Ledart from Play Store (Android)



QR code for Ledart from AppStore (IOS)

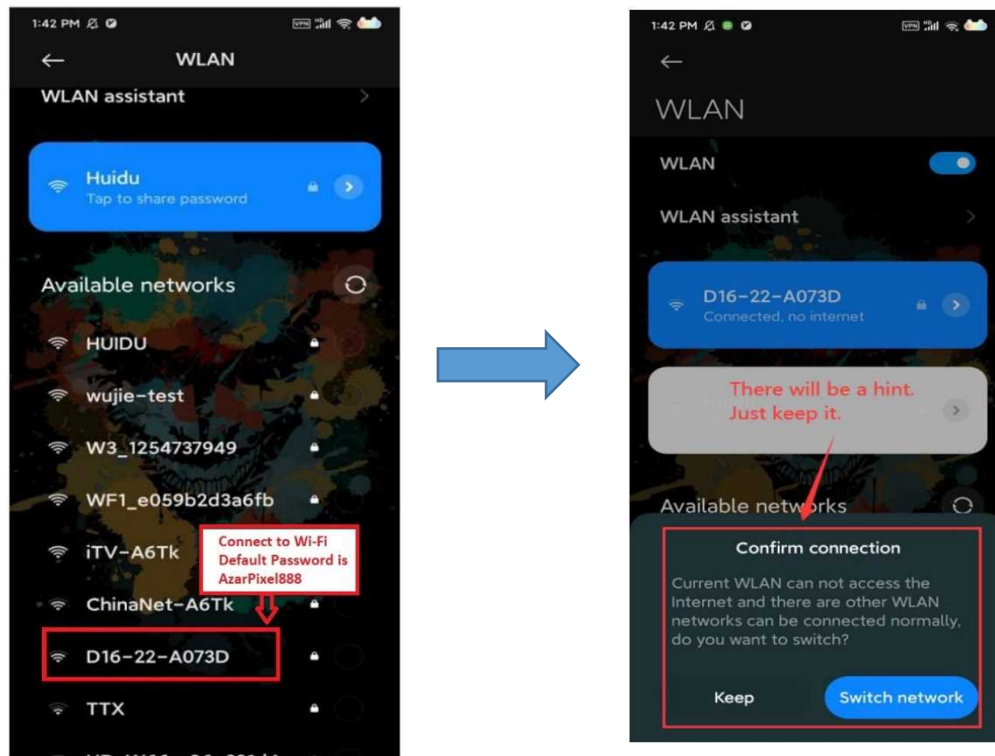
Connect D16's Wi-Fi and make new programs in Ledart



Adding New Display

On your mobile device, go to Wi-Fi settings and connect to the D16 control card's Wi-Fi network. The network name (SSID) will typically be printed on the panel's frame or its outer packaging. This network name could be something like **"D16-22-A073D"**. The default Wi-Fi password is **"AzarPixel888"**.

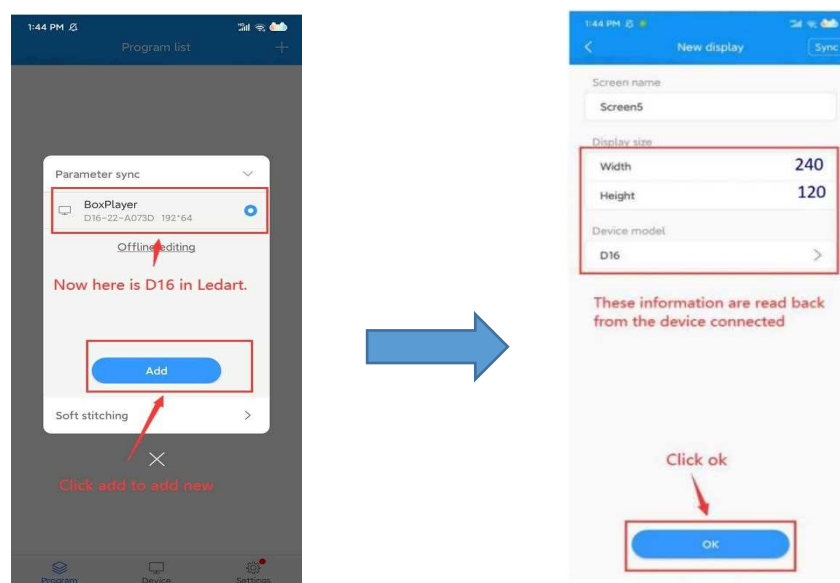
Note: If you wish, you can change the SSID and password through the HDPlayer by connecting it via the Ethernet port and cable, as explained in Section 6: System Control, Wi-Fi Password/SSID Reset part.



Connect to Wi-Fi

After successfully connecting to the Wi-Fi network, it is necessary to set the correct screen parameters to ensure proper display operation. To do this, open the LedArt app and navigate and Click “Add”. Select “**Screen Parameter Settings**” Then, configure the screen width, height, Device model according to your LED panel specifications.

Device type: **D16**, width: **240**, height: **120**



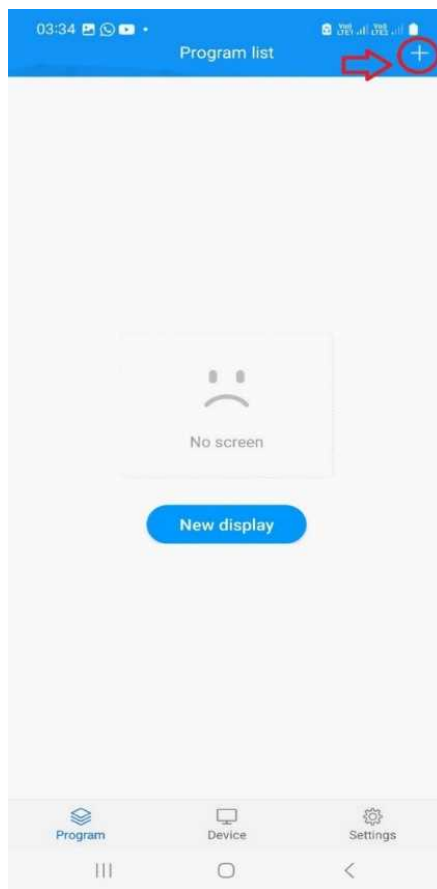
Set the correct screen parameters

Create New Screen.

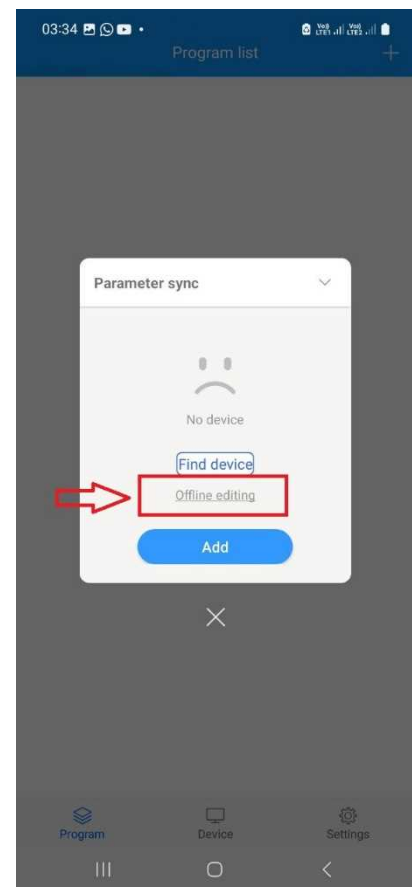
Click on **“New Display”** or the **“+”** icon to start creating a brand-new program. This will open a fresh workspace where you can customize and build your program from scratch.

Then you can add your desired content, such as text, images, videos, animations, or clock displays.

You can add new programs or edit existing ones even when you are not connected to the panel’s Wi-Fi. This allows you to prepare and modify content offline, and upload it to the LED display later when a connection is established.

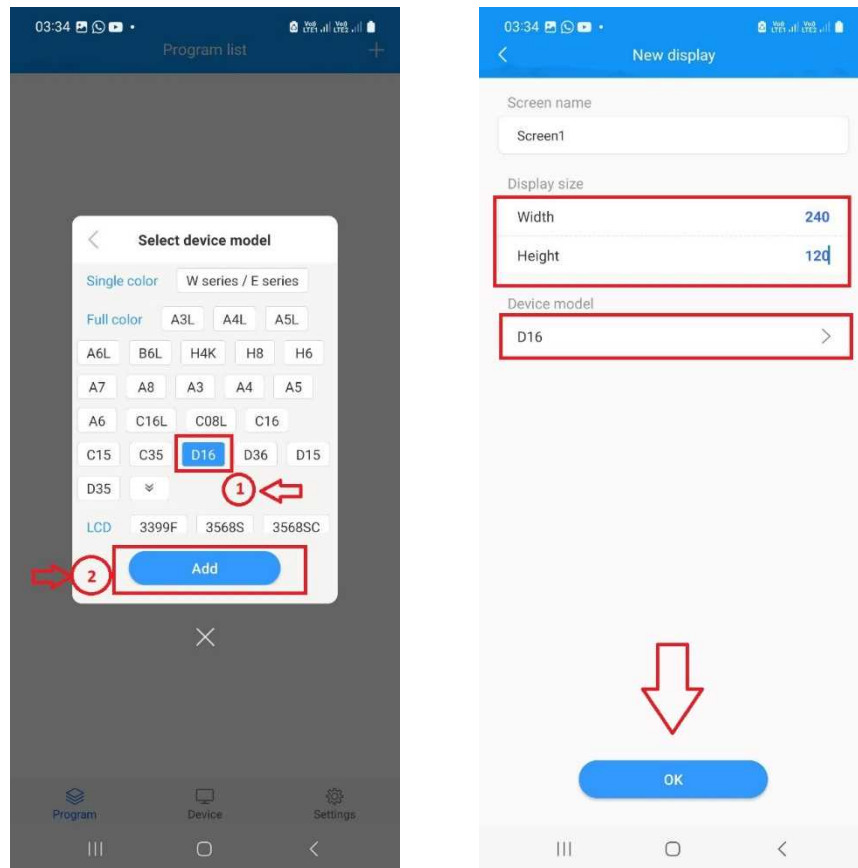


Edit New Display and add content (Click “New Display” or “+”)



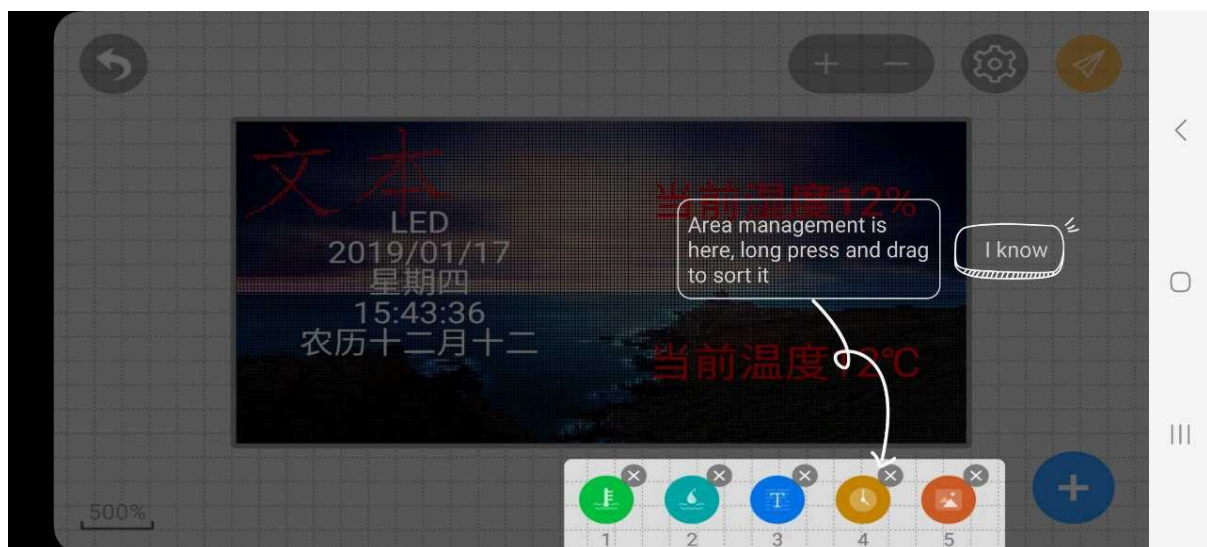
Offline connection editing

When editing a program offline in the **LedArt app**, you must set the correct screen parameters before creating or modifying content. Select **“Screen Parameter Settings,”** then enter the screen width, height, and device model according to your **LED panel’s specifications**. This ensures that your program matches the actual display size and configuration, preventing display issues when you later upload the program to the panel.



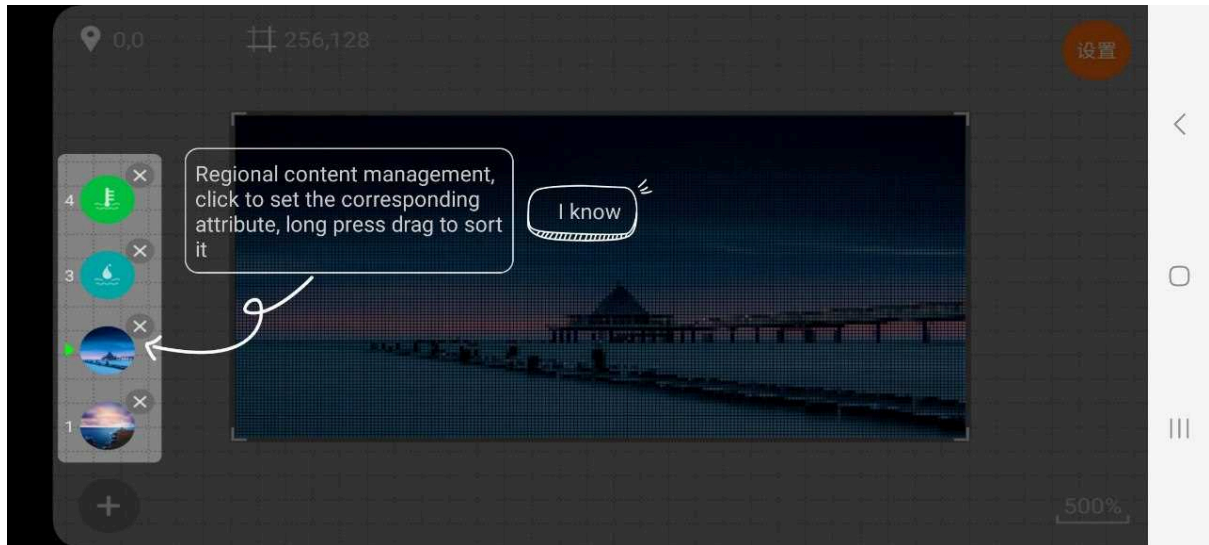
Set the correct device type and screen parameters in offline connection

Add Content to New Screen



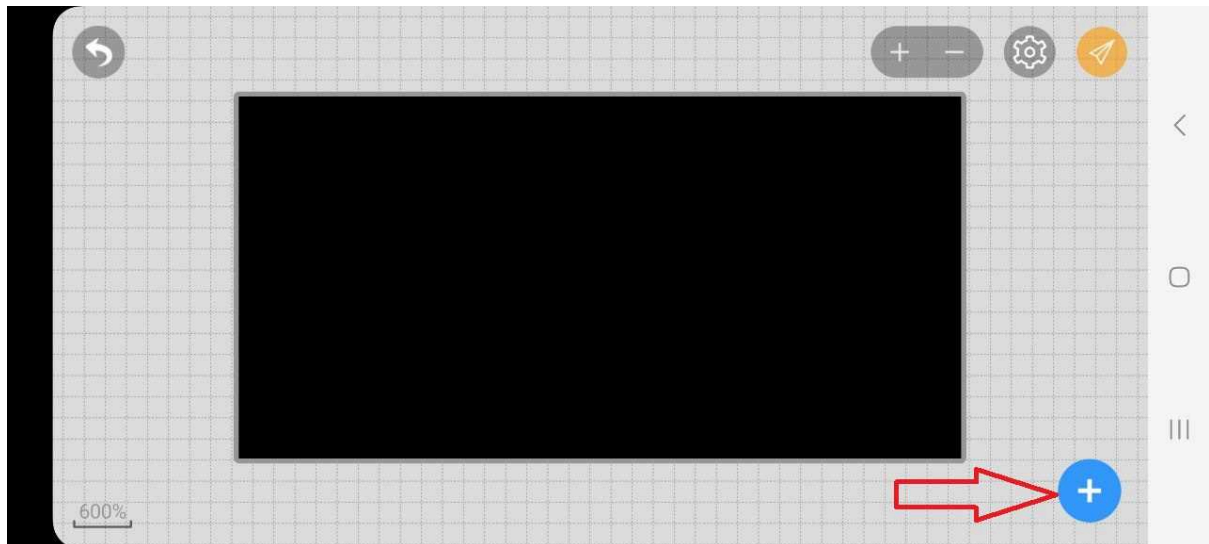
First check the user guide in order to create content

The first step in creating a screen program is to select the content type you want to add, such as video, text, image, clock, or other options. The application also includes a built-in tutorial guide to help you easily navigate the creation process step-by-step.

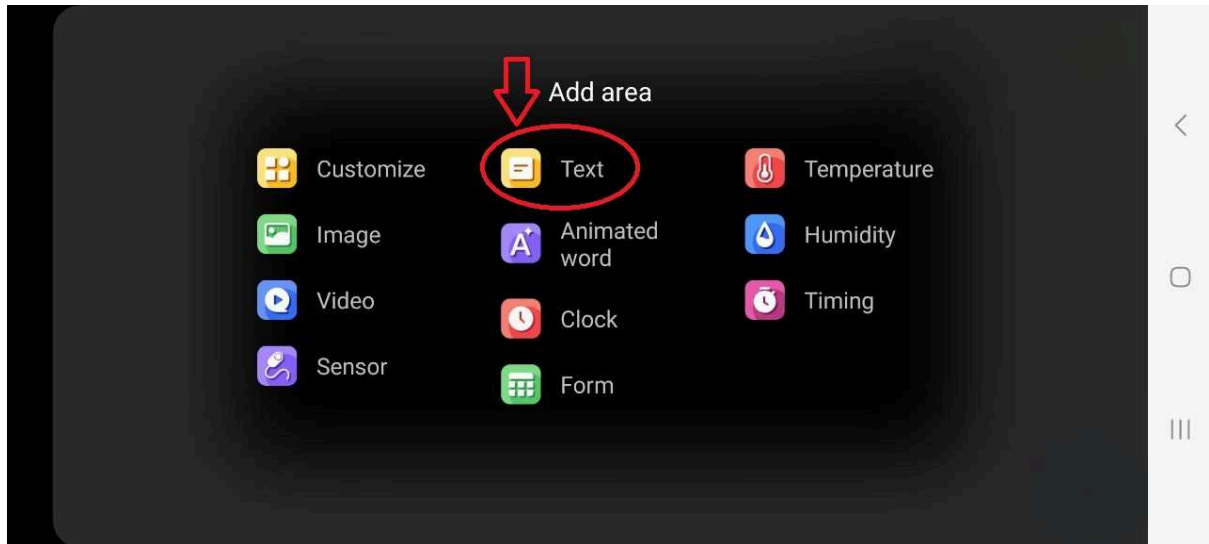


Check the first user guide in order to create content

By clicking the "+" button in the app, you can access all available content types-such as text, images, videos, clocks, and more-to add to your program directly from your smartphone. This allows you to easily customize and enrich your LED display content.

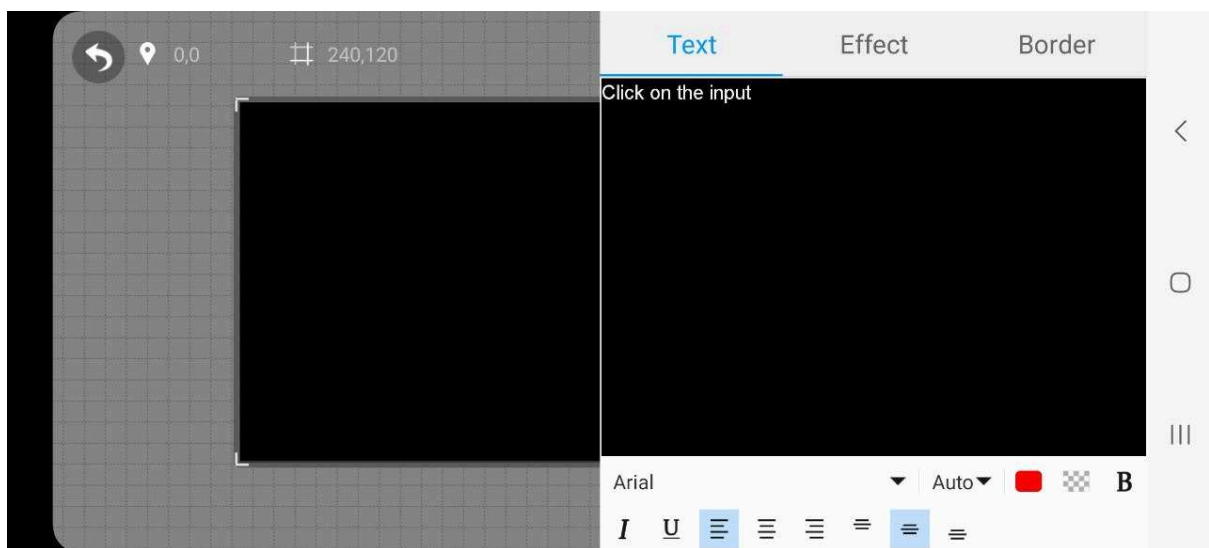


Click "+" to add content



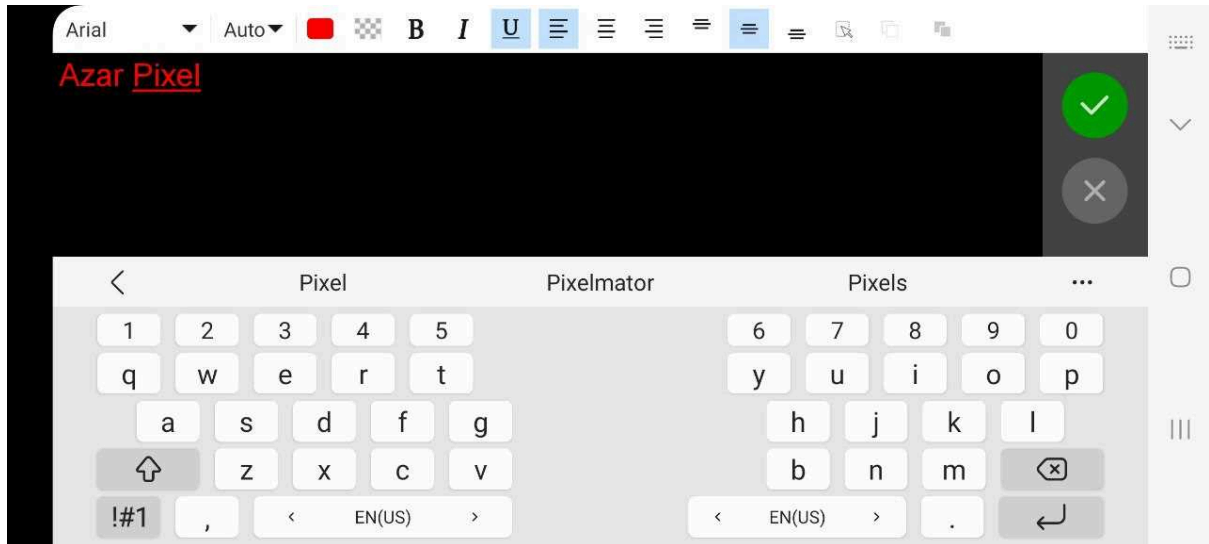
Select your content type

For example, if you choose to add text to your program, click on **“Text”**. A detailed window will then open, allowing you to enter and edit your text content with various formatting options like **“effect”** and **“border”** for text.



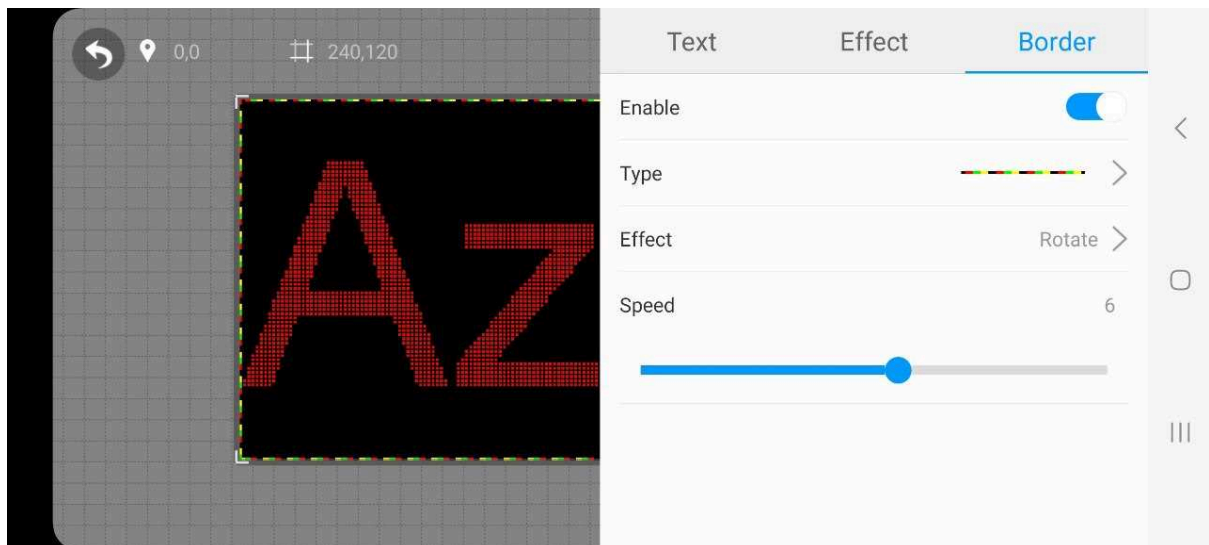
Example: Preview of the Text Section

In the **Text Section**, you can enter any text you wish and select your preferred font style and size to customize its appearance.

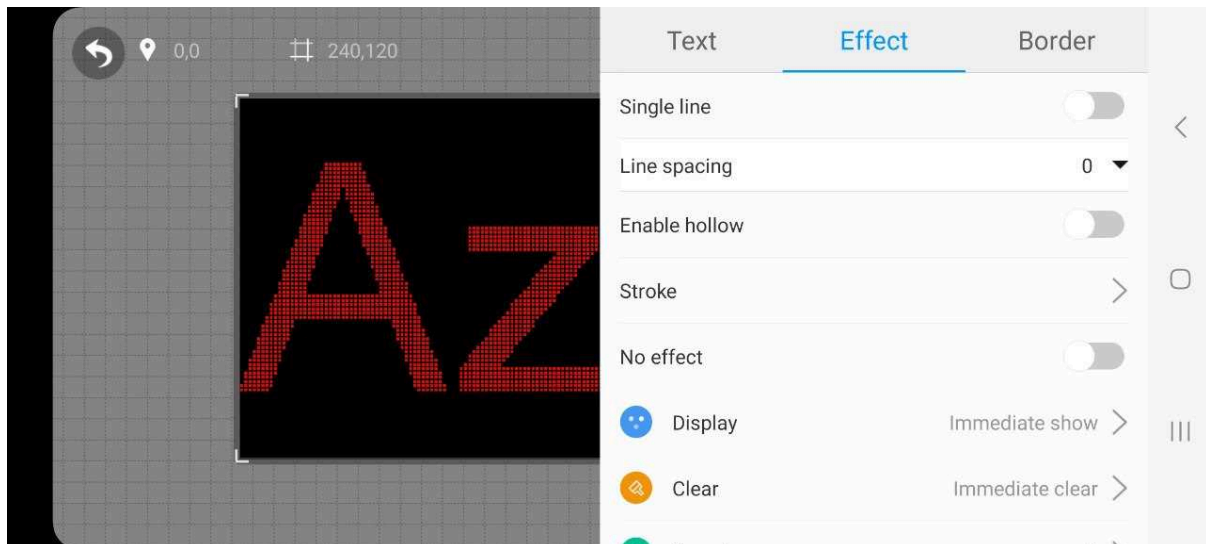


Writing an example for your text.

After entering your text, you can proceed to the “**Effect**” and “**Border**” sections for additional customization options, allowing you to enhance the appearance of your text with various visual effects and border styles.



Create Border for the Text frame.



Add effect for the Text.

You can add various content types-such as video, images, animations, a clock, and more-to your display panel program. Once you have finished creating and arranging your content, you need to “**send**” the program (the created program) to the panel. This is typically done by selecting “**send**” option within the control app, which will transfer your program to the LED panel for playback. Ensure your device is connected to the panel, either via Wi-Fi or another supported method, before sending the program to complete the process.

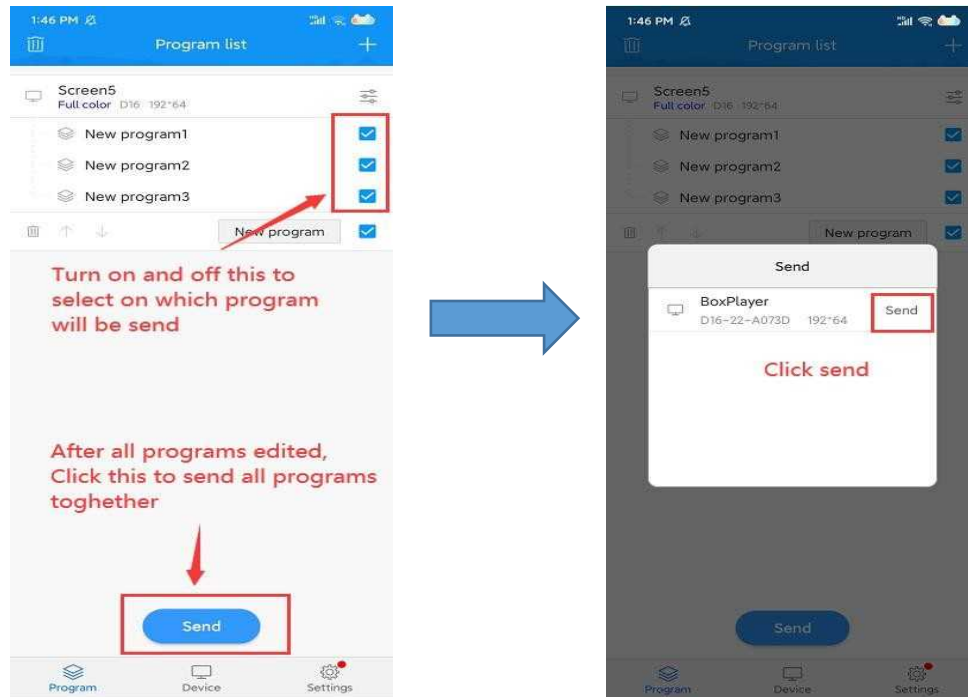
At times, it can be more convenient to customize your content initially using desktop software, mobile apps, or advanced graphic and video editing tools like Adobe Photoshop or Premiere. After saving your content in a compatible format, you can then upload it to your program.



Sending (Uploading) the program.

Returning to the main menu of the application, you will see a list of all the programs you have created. To display any program on the panel, simply select it and click the “**Send**” button. This will upload the chosen program to the LED panel for immediate playback.

You can select one or multiple programs from the list to send to the panel simultaneously. This allows you to manage and update your display content efficiently.



Choose a group or a program to be sent.

Note:

The LED display requires approximately one minute to boot up after powering on. Please wait patiently during this time before operating the device.

You can easily create new programs to display a variety of content beyond just text. Be creative and customize your LED panel to showcase dynamic advertisements, promotions, or any message you desire, turning it into an effective and engaging advertising platform!

Let every light speak your message, and every pixel carry your passion,
may your journey ahead be luminous!

We, in AzarPixel, are honored to be part of your story.

Thanks for your Trust.

All the Best.